

WM-FX171/FX173/FX177

SERVICE MANUAL

Canadian Model

WM-FX173/FX177

AEP Model

E Model

WM-FX171/FX173



Photo : WM-FX173

Model Name Using Similar Mechanism	NEW
Tape Transport Mechanism Type	MF-WMFX171-114

SPECIFICATIONS

- **Frequency range**
FM : 87.6 - 107.9 MHz
AM : 531 - 1,602 kHz
- **Power requirements**
3V DC batteries R6 (AA) × 2 / External DC 3V power sources
- **Dimensions**
FX173 : 88.5 × 118.6 × 38.2 mm
(3 1/2 × 4 3/4 × 1 9/16 inches) (w / h / d) incl. projecting parts and controls
FX171/FX177 : 88.5 × 118.6 × 37.6 mm
(3 1/2 × 4 3/4 × 1 1/2 inches) (w / h / d) incl. projecting parts and controls
- **Mass**
FX173 : Approx. 165 g (5.9 oz) / Approx. 245g (8.7 oz) incl. batteries and a cassette
FX171/FX177 : Approx. 160 g (5.7 oz) / Approx. 240 g (8.5 oz) incl. batteries and a cassette
- **Supplied accessories**
Stereo headphone or Stereo earphones (1) / Belt clip (1)

Design and specifications are subject to change without notice.

RADIO CASSETTE PLAYER

SONY®



TABLE OF CONTENTS

1. GENERAL	2
2. DISASSEMBLY	
2-1. Cabinet (Front) Assy	3
2-2. Main Board	4
2-3. Cassette Lid	4
2-4. Mechanism Deck	5
2-5. Belt, Motor (Reel/Capstan)	5
3. MECHANICAL ADJUSTMENT	6
4. ELECTRICAL ADJUSTMENT	6
5. DIAGRAMS	
5-1. Block Diagram	8
5-2. Schematic Diagram (FX171/FX177 Models)	10
5-3. Printed Wiring Board (FX171/FX177 Models)	13
5-4. Printed Wiring Board (FX173 Model)	17
5-5. Schematic Diagram (FX173 Model)	21
5-6. IC Block Diagrams	24
6. EXPLODED VIEWS	
6-1. Cabinet Section	25
6-2. Main Board Section	27
6-3. Mechanism Section-1	28
6-4. Mechanism Section-2	29
7. ELECTRICAL PARTS LIST	30

Flexible Circuit Board Repairing

- Keep the temperature of the soldering iron around 270° C during repairing.
- Do not touch the soldering iron on the same conductor of the circuit board (within 3 times).
- Be careful not to apply force on the conductor when soldering or unsoldering.

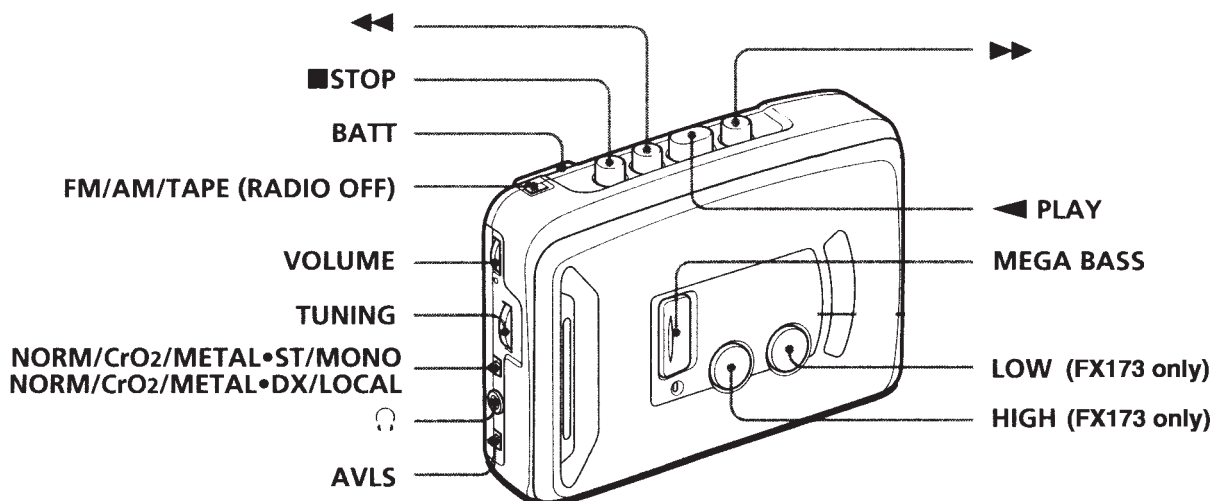
Notes on chip component replacement

- Never reuse a disconnected chip component.
- Notice that the minus side of a tantalum capacitor may be damaged by heat.

SECTION 1 GENERAL

This section is extracted from instruction manual.

• LOCATION OF CONTROL



SECTION 2 DISASSEMBLY

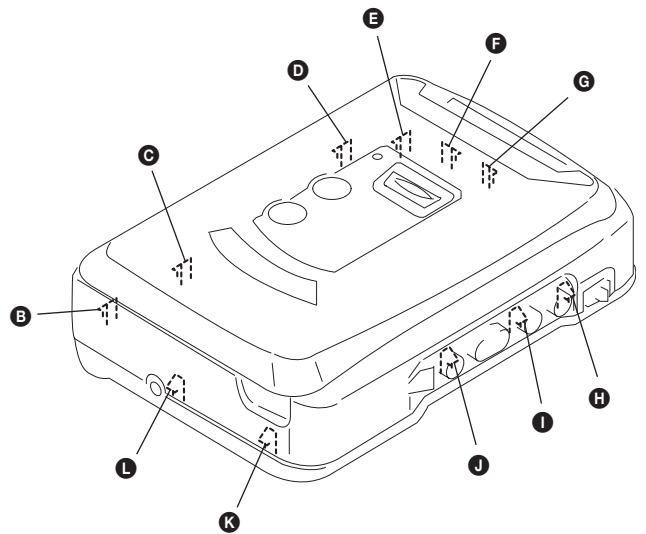
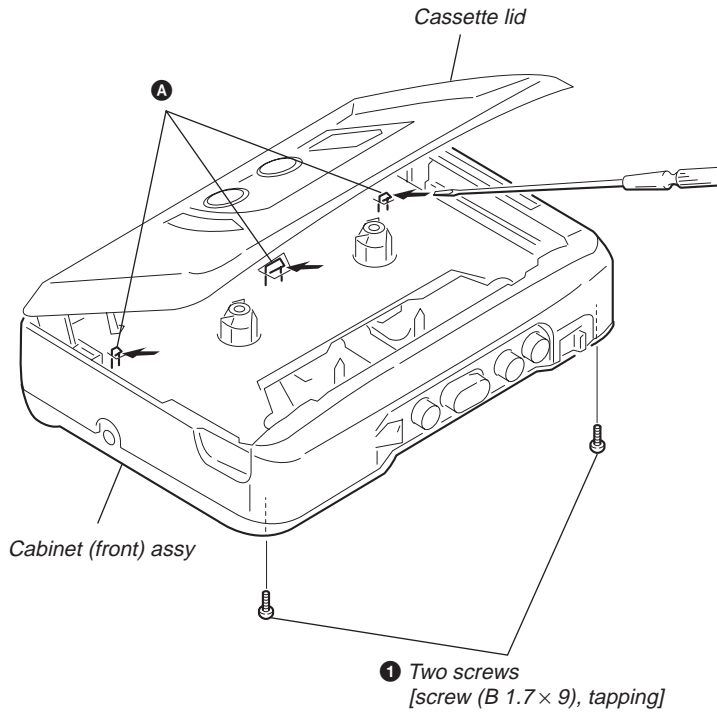
- This set can be disassembled in the order shown below.

2-1. CABINET (FRONT) ASSY → 2-2. MAIN BOARD → 2-3. CASSETTE LID → 2-4. MECHANISM DECK → 2-5. BELT, MOTOR (REEL/CAPSTAN)

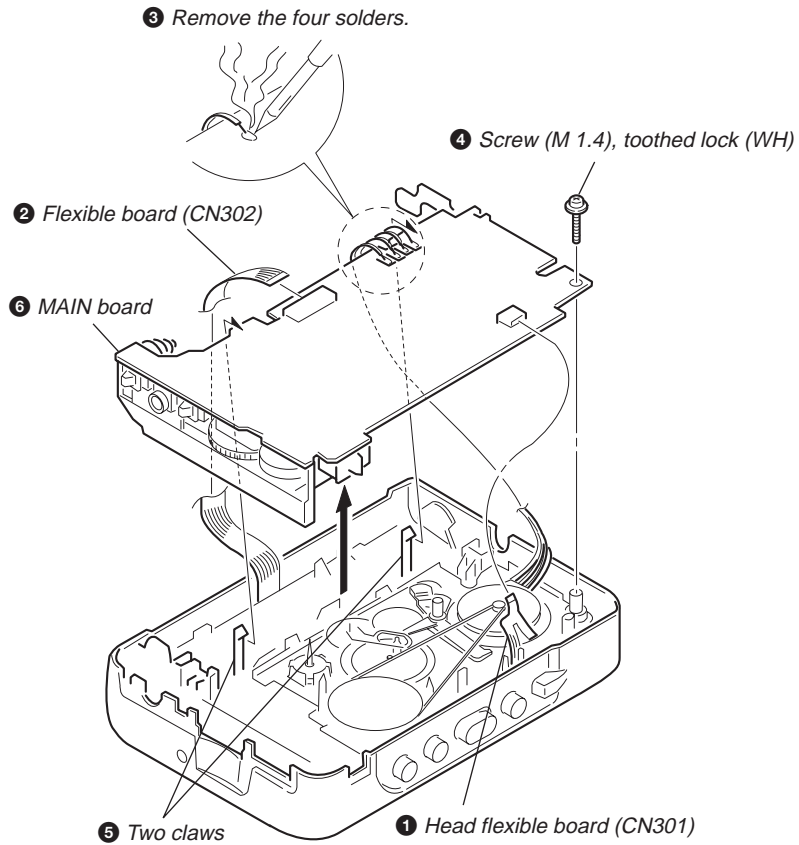
Note : Follow the disassembly procedure in the numerical order given.

2-1. CABINET (FRONT) ASSY

- 2 Insert the precision screwdriver (1.4 mm flat-blade) into the slit at claw **A** and release the claw.
- 3 Remove the cabinet (front) assy. (Release all claws **B** to **L** in alphabetical order.)

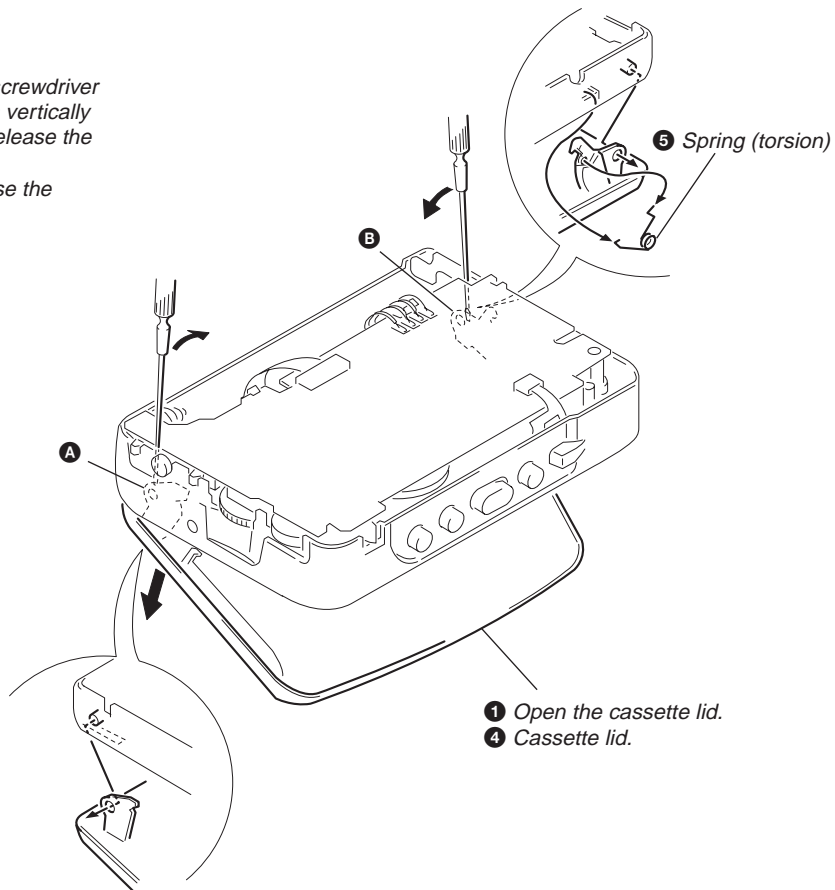


2-2. MAIN BOARD

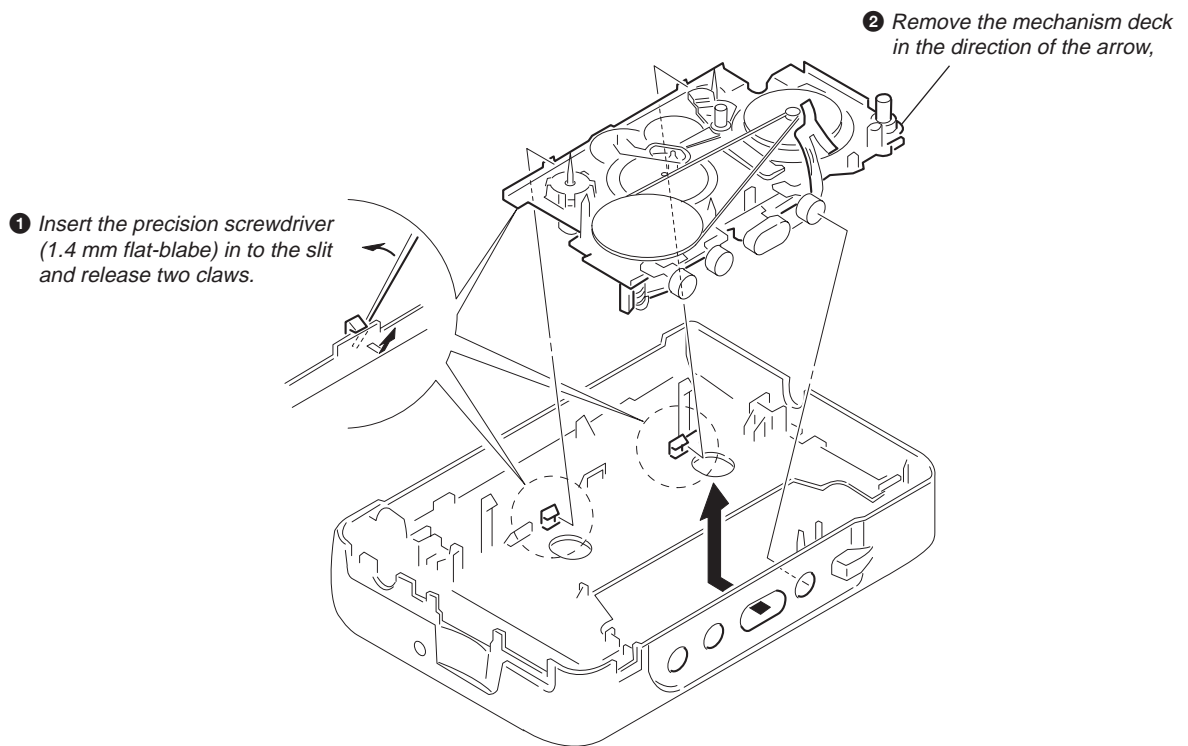


2-3. CASSETTE LID

- ② Insert a precision screwdriver (1.4 mm flat-blade) vertically into portion **A** to release the hinge plate.
- ③ Portion **B** to release the hinge plate.

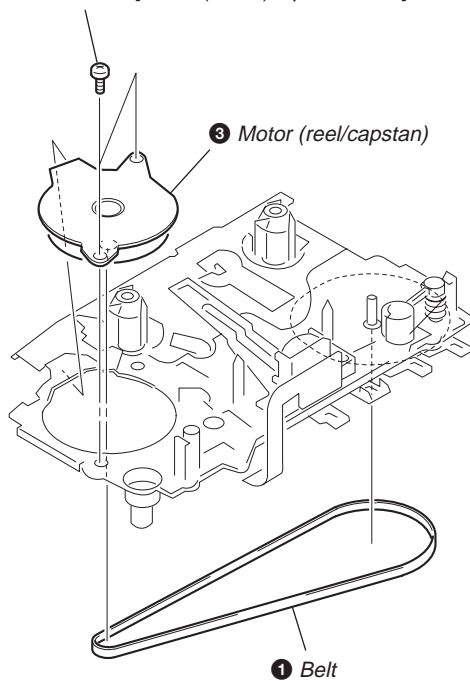


2-4. MECHANISM DECK



2-5. BELT, MOTOR (REEL/CAPSTAN)

❷ Two screws [screw (M 1.4), special head]



SECTION 3 MECHANICAL ADJUSTMENT

PRECAUTION

1. Clean the following parts with a denatured-alcohol-moistened swab :

Playback head	Pinch roller
Rubber belt	Capstan
2. Demagnetize the playback head using a demagnetizer.
3. Do not use a magnetized screwdriver for adjustments.
4. After adjusting, apply screw-locking compound onto the adjusted parts.
5. Unless specified otherwise, use a specified voltage (3.0V) to perform the adjustments.

Torqu Measurement

Mode	Torque meter	Meter reading
FWD	CQ-102C	20 - 30 g · cm
FWD Back Tension		0.4 - 2.0 g · cm
REV	CQ-102RC	20 - 30 g · cm
REV Back Tension		0.4 - 2.0 g · cm
FF	CQ-201B	More than 40 g · cm
REW		More than 40 g · cm

SECTION 4 ELECTRICAL ADJUSTMENT

PRECAUTION

1. Specified voltage : 3.0V
2. Switch position
AVLS switch : NORM

CASSETTE SECTION

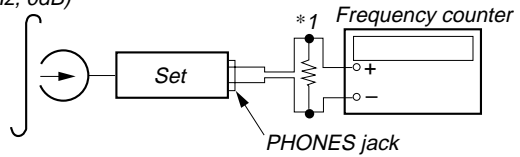
Test Tape

Type	Signal	Purpose
WS-48A	3kHz, 0dB	Tape Speed Adjustment

Tape Speed Adjustmnet

Procedure :

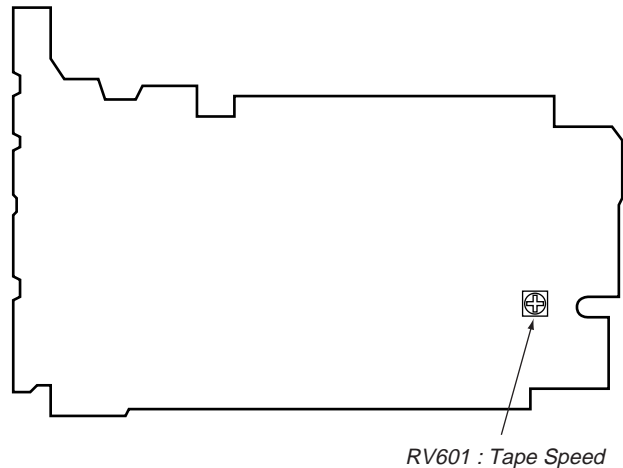
*Test tape
WS-48A
(3kHz, 0dB)*



1. Playback WS-48A (Tape center part) and adjust RV601 so that the frequency counter reading becomes 3,000Hz ± 15Hz.
2. Playback WS-48A (Tape top and end).
Check that frequency counter reading is within 1.5% of the reading of step1.

Adjustment Point :

[MAIN BOARD] — SIDE B —



*1

16Ω: E, EA, C & SA, PA Models.
32Ω: AEP, IT, E, CND, FR Models.

- Abbreviation

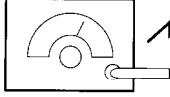
CND	: Canadian
IT	: Italian
EE	: East European
EA	: Saudi Arabia
FR	: French
PA	: Panama
C & SA	: Central and South America

TUNER SECTION

[AM]

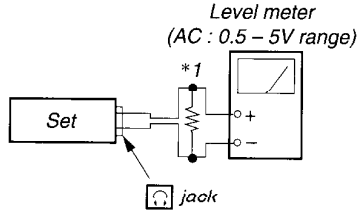
BAND switch : AM

AM RF signal generator



Put the lead-wire antenna close to the set.

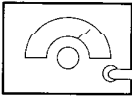
30% amplitude modulation by 400Hz signal.
Output level : as low as possible



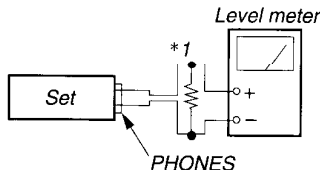
[FM]

BAND switch : FM

FM RF signal generator



75kHz(100%) frequency deviation by 1Hz signal.
Output level : as low as possible.



- Repeat the procedures in each adjustment several times, and the frequency coverage and tracking adjustments should be finally done by the trimmer capacitors.

AM FREQUENCY COVERAGE ADJUSTMENT

Adjust for a maximum reading on level meter.

L4	505 kHz \pm 5 kHz (516.5 kHz \pm 5 kHz)
CT1 (4/4)	1,770 kHz \pm 20 kHz (1,631.5 kHz \pm 10 kHz) [1,690 kHz \pm 10 kHz]

() : EA, IT Models [] : AEP, E, FR, EE Models

AM TRACKING ADJUSTMENT

Adjust for a maximum reading on level meter.

L1	620 kHz (800 kHz)
CT1 (1/4)	1,400 kHz (1,300 kHz)

() : EA, IT, EE Models

AM IF ADJUSTMENT

Adjust for a maximum reading on level meter.

T1	1,000 kHz
----	-----------

FM FREQUENCY COVERAGE ADJUSTMENT

Adjust for a maximum reading on level meter.

L3	86.0 MHz \pm 0.2 MHz (87.35 MHz \pm 0.1 MHz) [64.0 MHz \pm 0.2 MHz]
CT1 (3/4)	109.5 MHz \pm 0.3 MHz (108.25 MHz \pm 0.2 MHz)

() : EA, IT Models [] : EE Model

FM TRACKING ADJUSTMENT

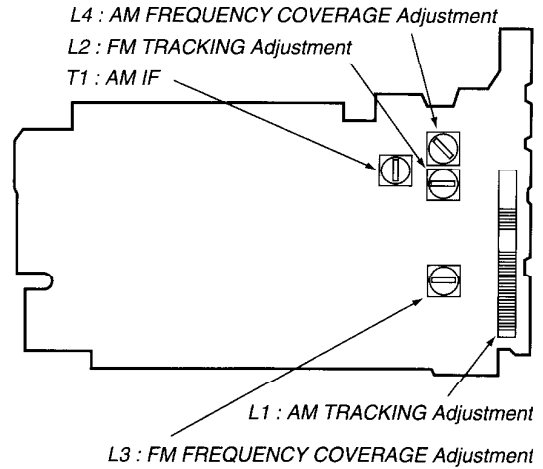
Adjust for a maximum reading on level meter.

L2	86 MHz (87.35 MHz) [64.0 MHz]
CT1 (2/4)	109.5 MHz (108.25 MHz)

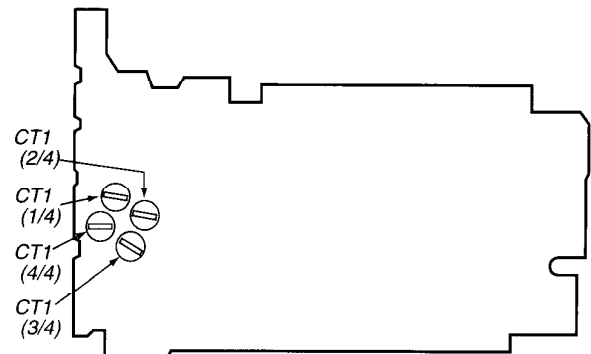
() : EA, IT Models [] : EE Model

Adjustment Parts Location :

[MAIN BOARD] — SIDE A —

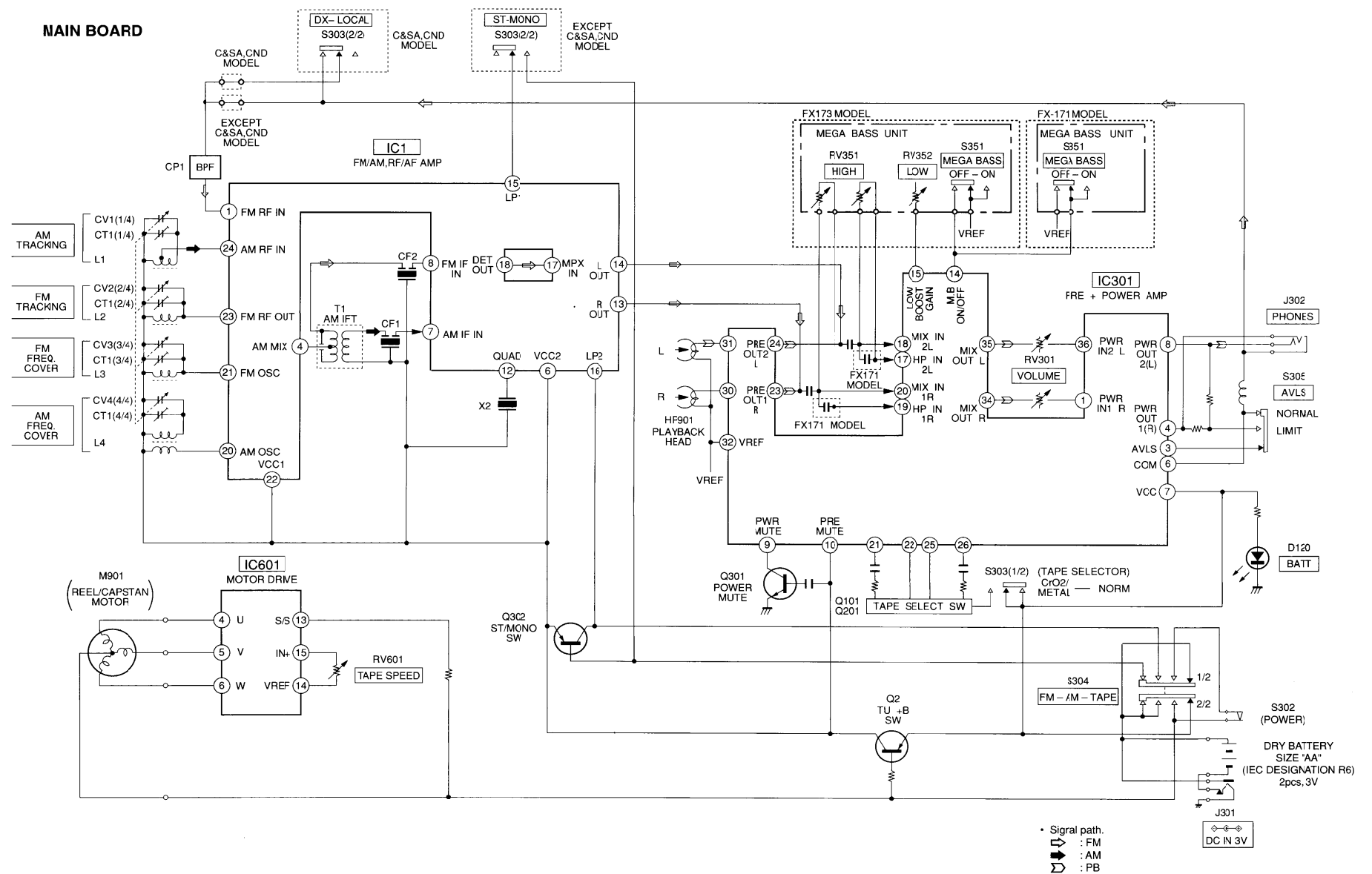


[MAIN BOARD] — SIDE B —

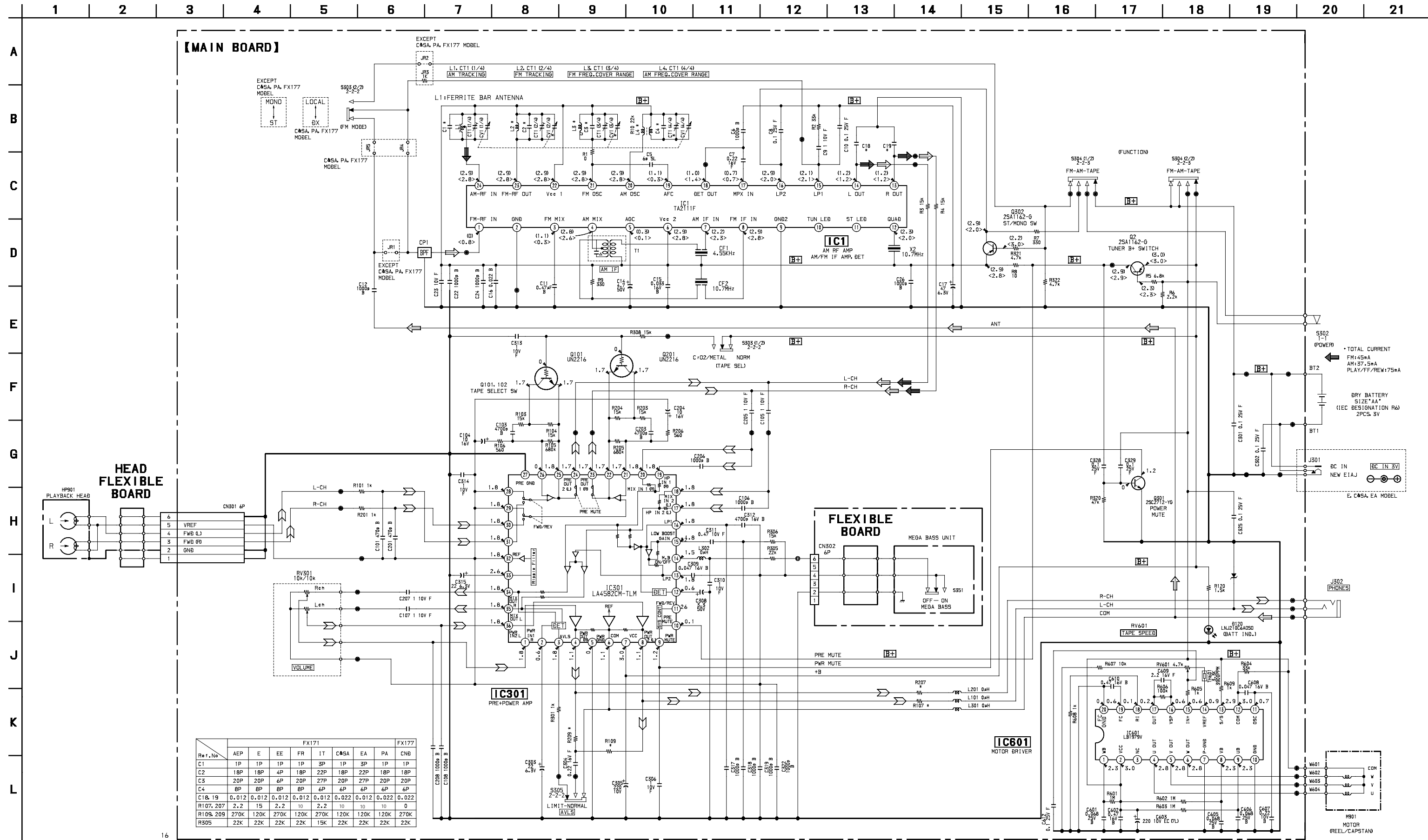


SECTION 5
DIAGRAMS

5-1. BLOCK DIAGRAM



5-2. SCHEMATIC DIAGRAM
(FX171/FX177 MODELS)

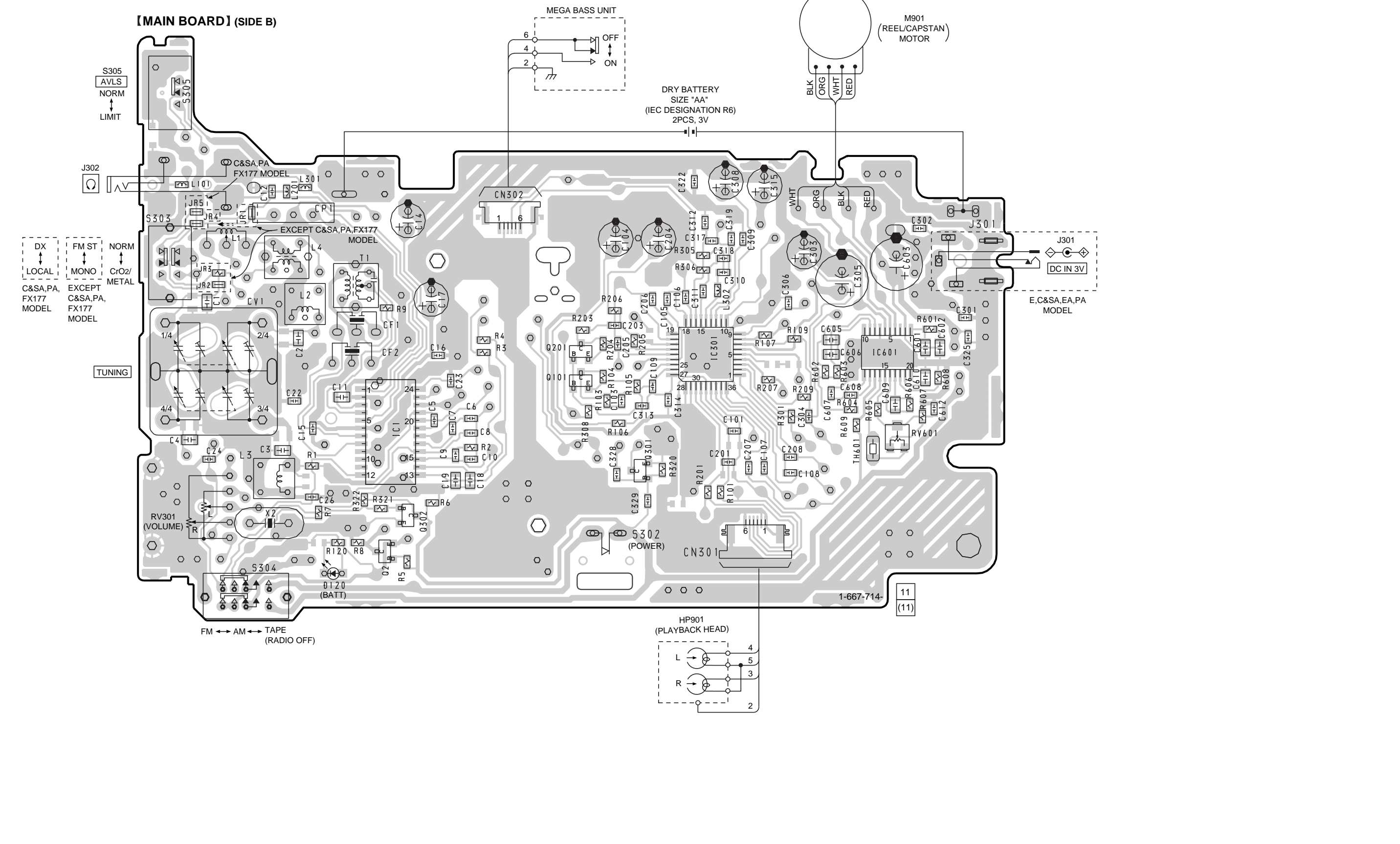
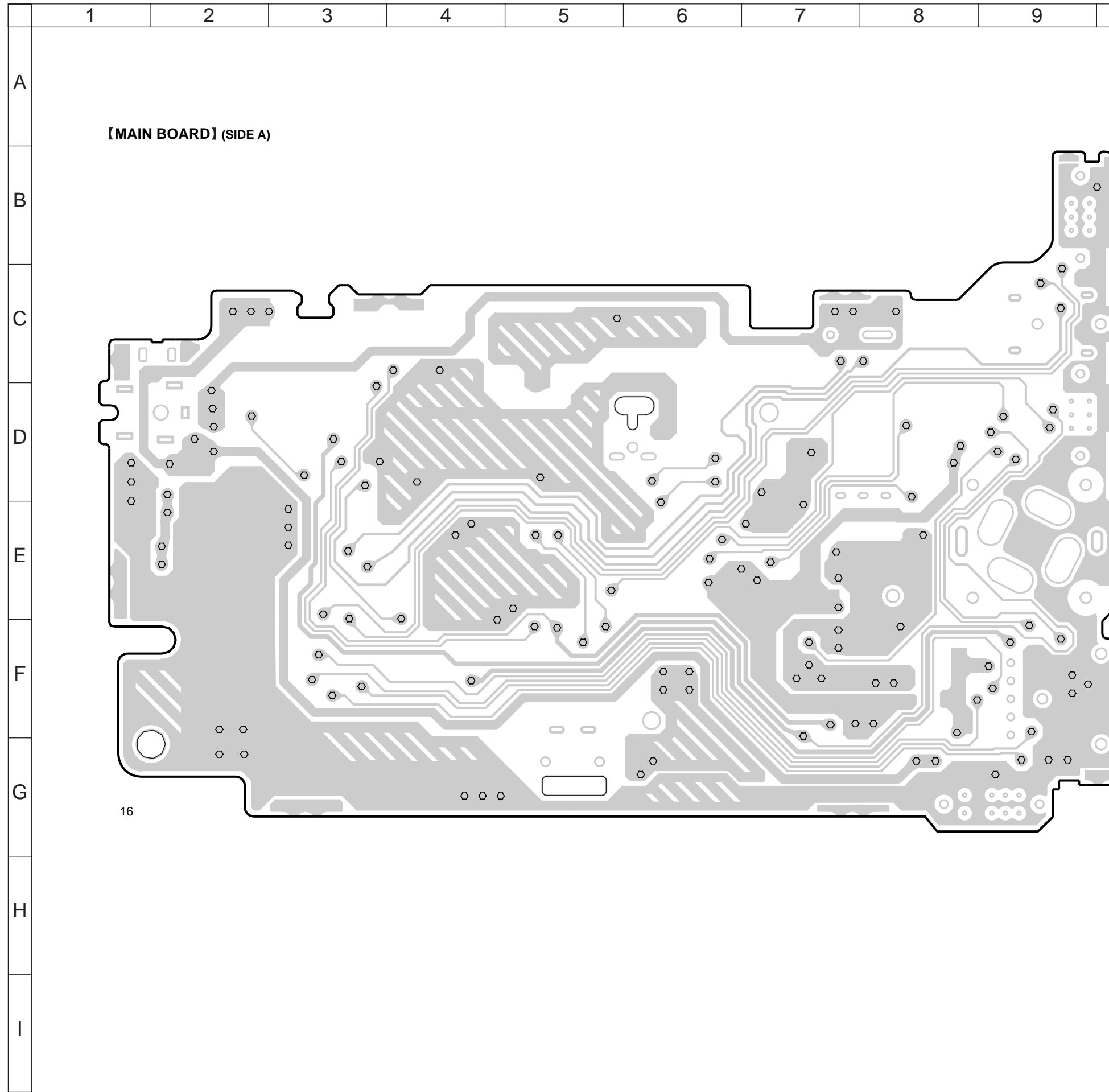


- Note:**
- All capacitors are in μF unless otherwise noted. pF : μpF 50 WV or less are not indicated except for electrolytics and tantalums.
 - All resistors are in Ω and $1/4\text{W}$ or less unless otherwise specified.
 - Δ : internal component.
 - \square : panel designation.
 - B+**: B+ Line.
 - \square : adjustment for repair.
 - Total current is measured with no cassette installed.
 - Power voltage is dc 3V and fed with regulated dc power supply from external power voltage jack.
 - Voltages and waveforms are dc with respect to ground under no-signal (detuned) conditions.
 - no mark: PB (TAPE)
 - (): AM
 - < >: FM
 - Voltages are taken with a VOM (Input impedance 10 M Ω). Voltage variations may be noted due to normal production tolerances.
 - Signal path.
 - \blacktriangle : FM
 - \blacktriangleright : AM
 - \blacktriangleleft : PB
 - Abbreviation
 - CND: Canadian model
 - IT: Italian model
 - EE: East European model
 - EA: Saudi Arabia model
 - FR: French model
 - PA: Panama model
 - C & SA: Central and South America models

5-3. PRINTED WIRING BOARD
(FX171/FX177 MODELS)

• Semiconductor Location

Ref. No.	Location
D120	G-13
IC1	F-14
IC301	E-17
IC601	E-18
Q2	G-14
Q101	E-15
Q201	E-15
Q301	F-16
Q302	F-14



Note:

- : parts extracted from the component side.
- : Through hole.
- ▨ : Pattern from the side which enables seeing. (The other layers' patterns are not indicated.)

Caution:

Pattern face side: Parts on the pattern face side seen from (Conductor B) the pattern face are indicated.

Parts face side: Parts on the parts face side seen from (Component A) the parts face are indicated.

• Abbreviation

CND : Canadian

IT : Italian

EE : East European

EA : Saudi Arabia

FR : French

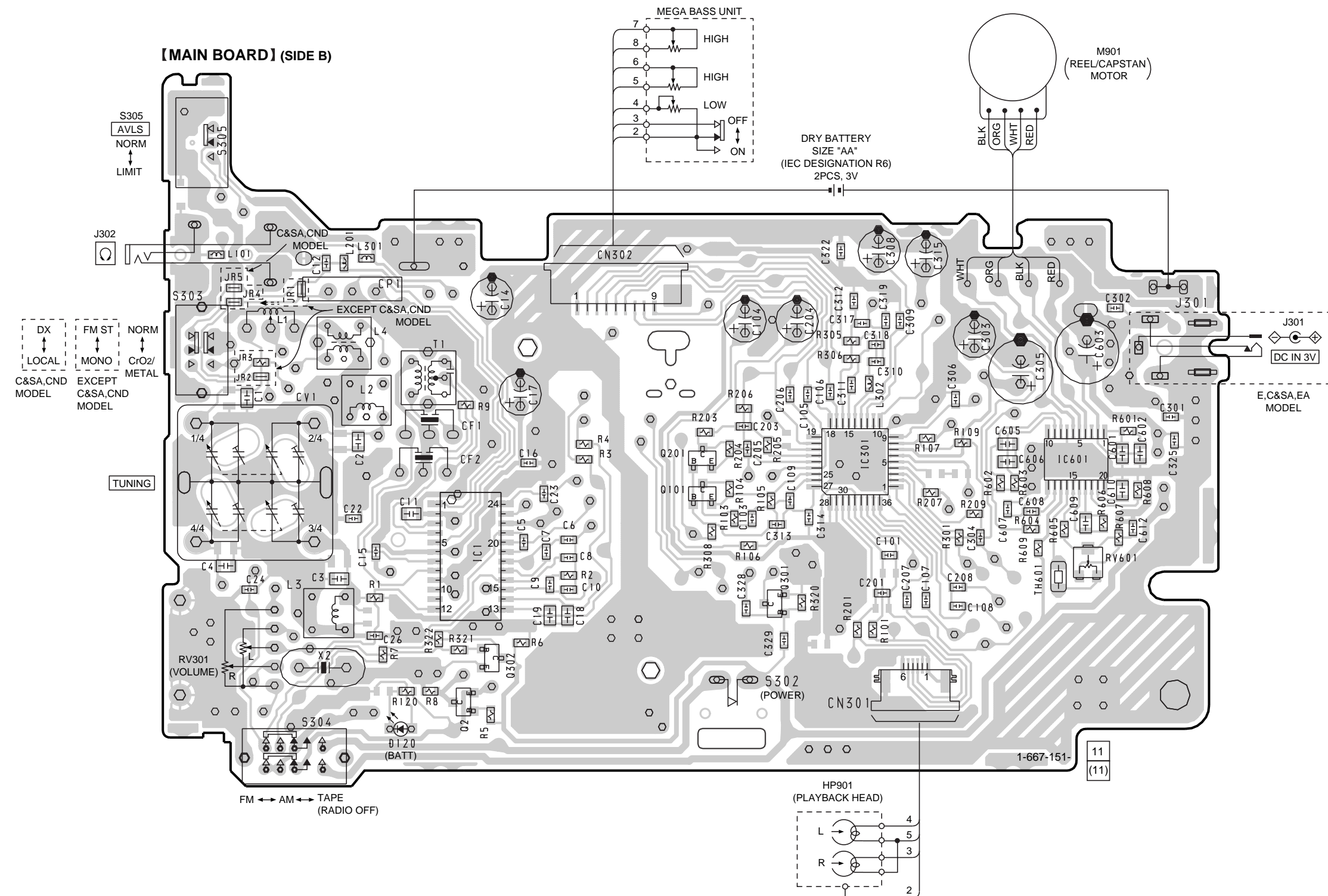
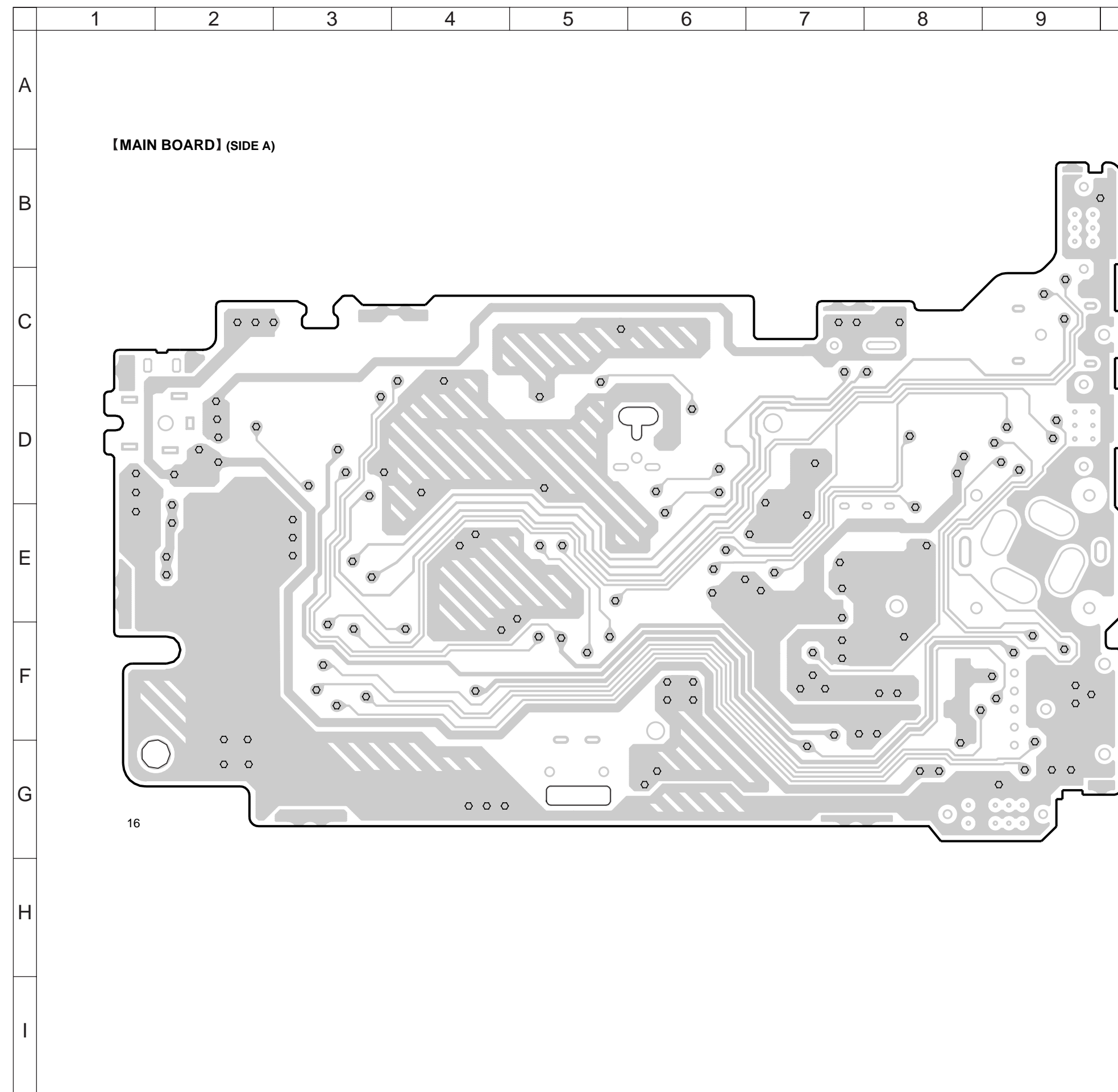
PA : Panama

C & SA: Central and South America

5-4. PRINTED WIRING BOARD
(FX173 MODEL)

• Semiconductor Location

Ref. No.	Location
D120	G-13
IC1	F-14
IC301	E-17
IC601	E-18
Q2	G-14
Q101	E-15
Q201	E-15
Q301	F-16
Q302	F-14



Note:

- : parts extracted from the component side.
- : Through hole.
- ▨ : Pattern from the side which enables seeing. (The other layers' patterns are not indicated.)

Caution:

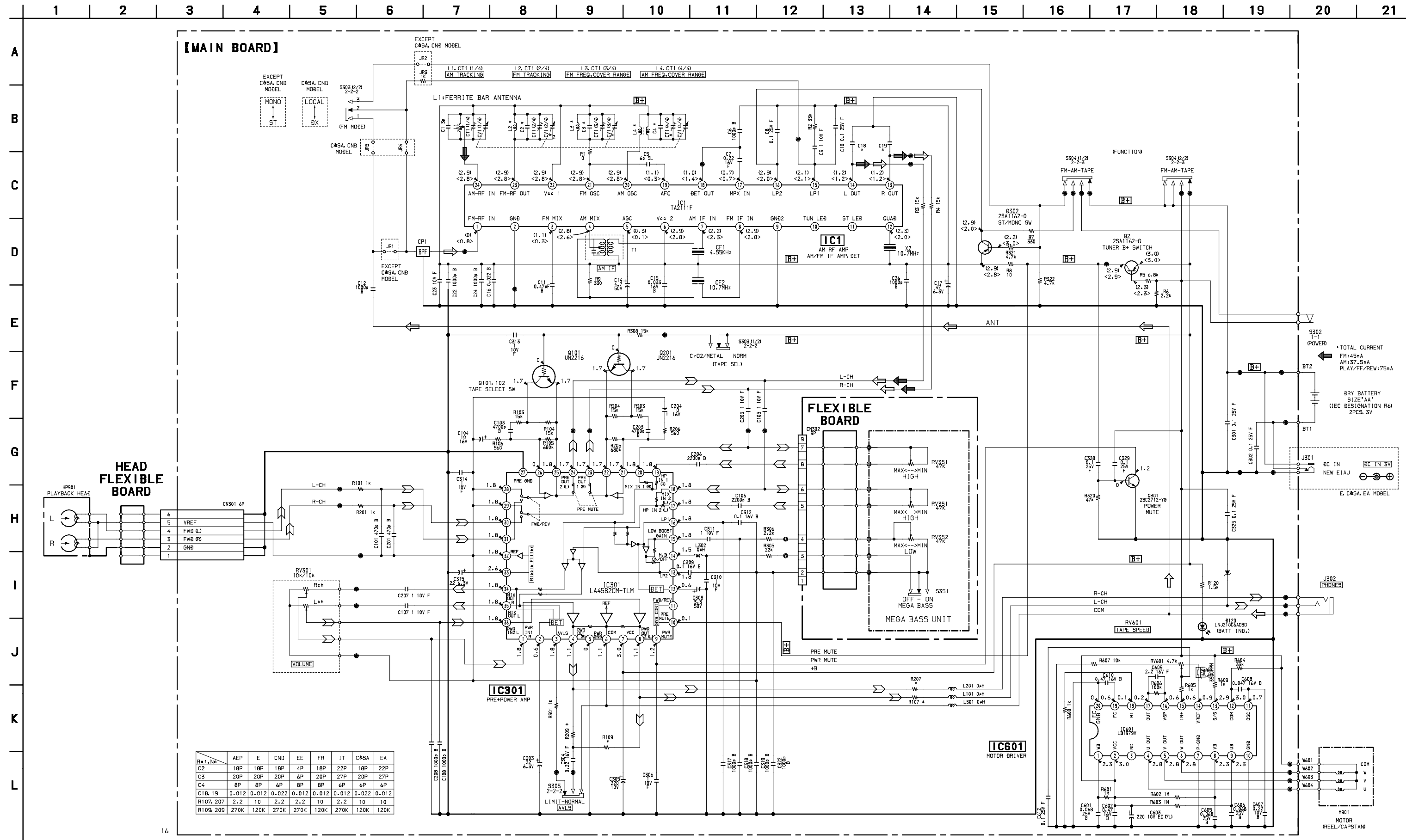
Pattern face side: Parts on the pattern face side seen from (Conductor B) the pattern face are indicated.

Parts face side: Parts on the parts face side seen from (Component A) the parts face are indicated.

• Abbreviation

- CND : Canadian
- IT : Italian
- EE : East European
- EA : Saudi Arabia
- FR : French
- C & SA: Central and South America

5-5. SCHEMATIC DIAGRAM
(FX173 MODEL)

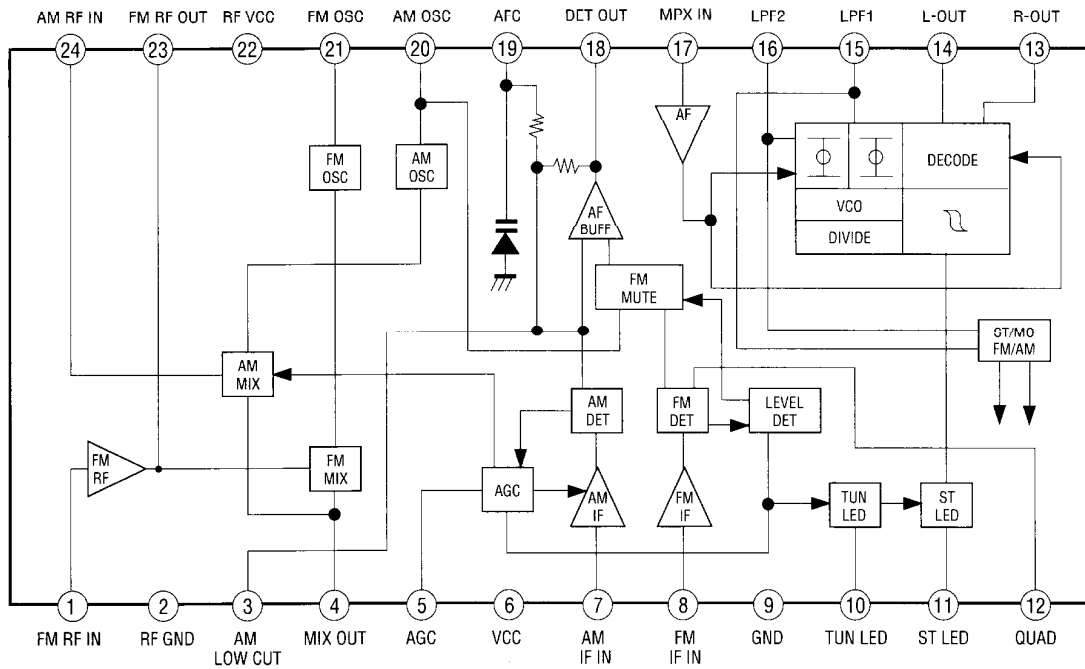


- Note:**
- All capacitors are in μF unless otherwise noted. pF : μF 50 V or less are not indicated except for electrolytics and tantalums.
 - All resistors are in Ω and $1/4$ W or less unless otherwise specified.
 - Δ : internal component.
 - \square : panel designation.
 - B+** : B+ Line.
 - \square : adjustment for repair.
 - Total current is measured with no cassette installed.
 - Power voltage is dc 3V and fed with regulated dc power supply from external power voltage jack.
 - Voltages and waveforms are dc with respect to ground under no-signal (detuned) conditions.
 - no mark : PB (TAPE)
 - () : AM
 - < > : FM
 - Voltages are taken with a VOM (Input impedance 10 $\text{M}\Omega$). Voltage variations may be noted due to normal production tolerances.
 - Signal path.
 - \square : FM
 - \square : AM
 - \square : PB
 - Abbreviation
 - CND : Canadian model
 - IT : Italian model
 - EE : East European model
 - EA : Saudi Arabia model
 - FR : French model
 - C & SA : Central and South America models

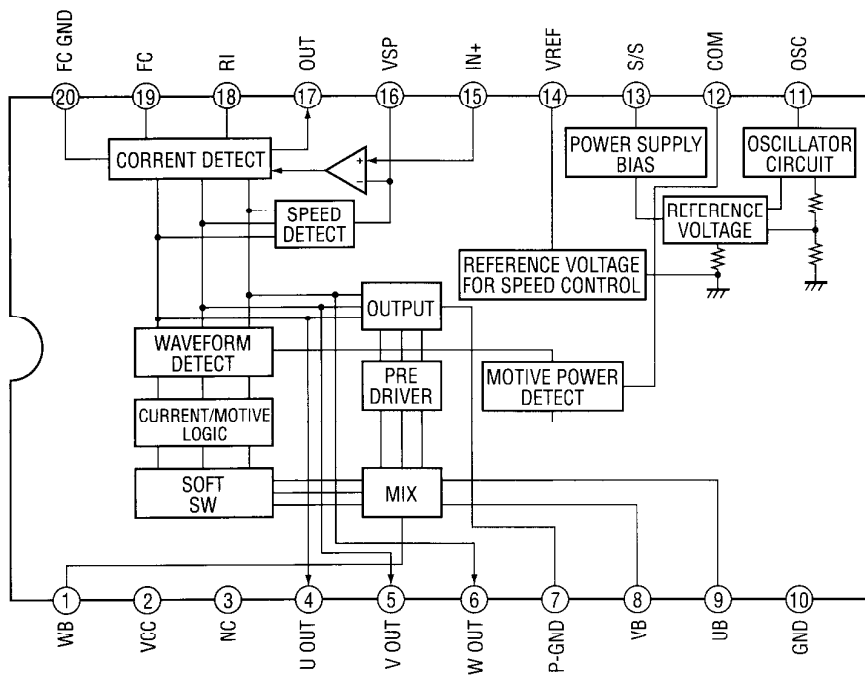
WM-FX171/FX173/FX177

5-6. IC BLOCK DIAGRAMS

IC1 TA2111F

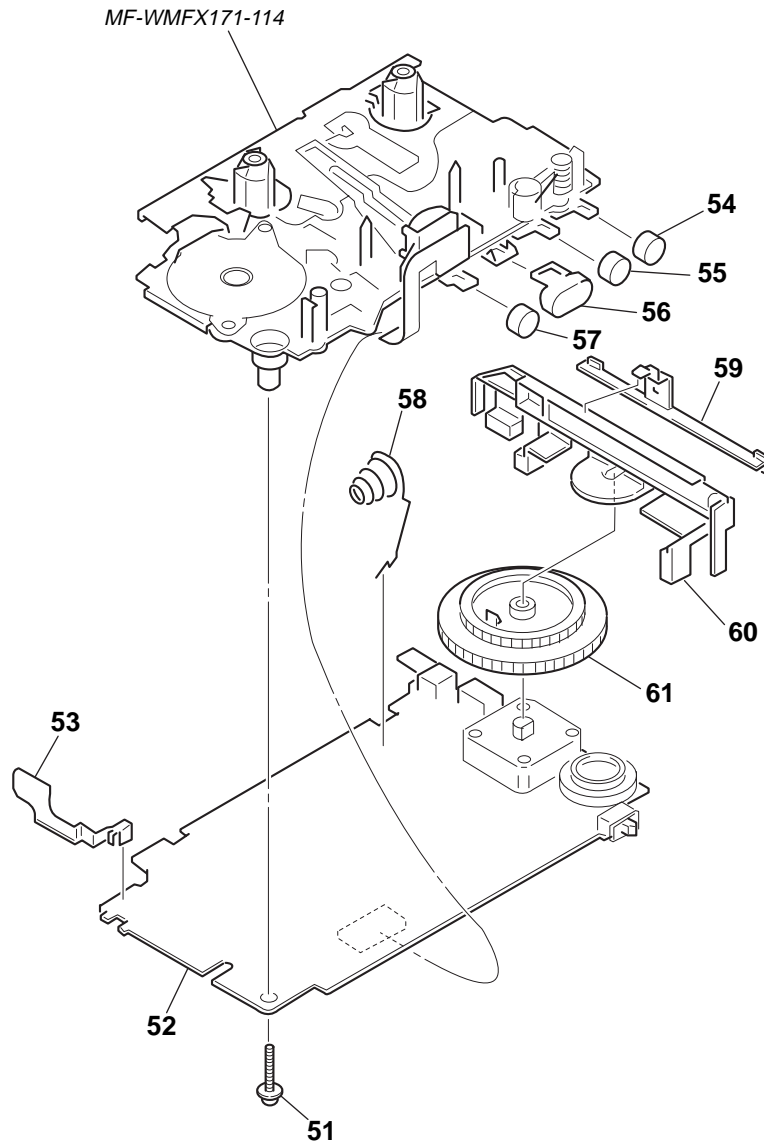


IC601 LB1979V



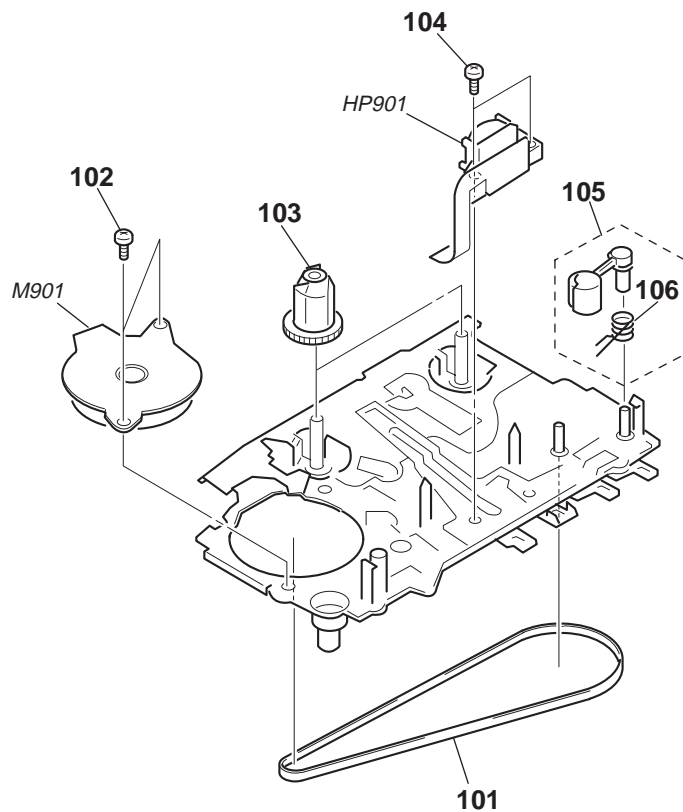
Ref. No.	Part No.	Description	Remarks	Ref. No.	Part No.	Description	Remarks
1	3-022-292-01	CABINET (REAR) (BLACK) (PA, E, C&SA, EA)		6	3-022-576-01	HOLDER, CASSETTE (BLACK)	
1	3-022-292-11	CABINET (REAR) (BLACK)	(AEP, IT, FR, EE, CND)	6	3-022-576-11	HOLDER, CASSETTE (BLUE)	(FX171: AEP, FR, E)
1	3-022-292-21	CABINET (REAR) (BLUE)	(FX173: E, C&SA, EA)	6	3-022-576-21	HOLDER, CASSETTE (GREEN)	(FX171: AEP, FR, E)
1	3-022-292-31	CABINET (REAR) (BLUE)	(FX173: AEP, IT, FR, EE, CND)	6	3-022-576-31	HOLDER, CASSETTE (RED)	(FX171: AEP, FR, E)
1	3-022-292-41	CABINET (REAR) (GREEN)	(FX173: E, C&SA, EA)	6	3-022-576-41	HOLDER, CASSETTE (SILVER)	(FX171: AEP, FR, E)
1	3-022-292-51	CABINET (REAR) (GREEN)	(FX173: AEP, IT, FR, EE, CND)	6	3-022-576-51	HOLDER, CASSETTE (BLACK)	(FX171: IT, EA)
1	3-022-292-61	CABINET (REAR) (RED)	(FX173: E, C&SA, EA)	6	3-022-576-61	HOLDER, CASSETTE (BLUE)	(FX171: IT, EA)
1	3-022-292-71	CABINET (REAR) (RED)	(FX173: AEP, IT, FR, EE, CND)	6	3-022-576-71	HOLDER, CASSETTE (GREEN)	(FX171: IT, EA)
2	3-019-856-01	LID, BATTERY CASE (BLACK)		6	3-022-576-81	HOLDER, CASSETTE (RED)	(FX171: IT, EA)
2	3-019-856-21	LID, BATTERY CASE (GREEN)	(FX173)	6	3-022-576-91	HOLDER, CASSETTE (SILVER)	(FX171: IT, EA)
2	3-019-856-31	LID, BATTERY CASE (RED)	(FX173)	6	3-022-583-01	HOLDER, CASSETTE (BLACK)	(FX173: EE)
2	3-019-856-41	LID, BATTERY CASE (SILVER)	(FX173)	6	3-022-583-11	HOLDER, CASSETTE (BLUE)	(FX173: EE)
3	3-022-577-01	CABINET (FRONT) (BLACK) (E, EA)		6	3-022-583-21	HOLDER, CASSETTE (GREEN)	(FX173: EE)
3	3-022-577-11	CABINET (FRONT) (BLUE)	(FX173: E, EA)	6	3-022-583-31	HOLDER, CASSETTE (RED)	(FX173: EE)
3	3-022-577-21	CABINET (FRONT) (GREEN)	(FX173: E, EA)	6	3-022-583-41	HOLDER, CASSETTE (SILVER)	(FX173: EE)
3	3-022-577-31	CABINET (FRONT) (RED)	(FX173: E, EA)	6	3-022-583-51	HOLDER, CASSETTE (BLACK)	(FX173: CND, C&SA)
3	3-022-577-51	CABINET (FRONT) (BLACK)	(AEP, IT, FR, EE)	6	3-022-583-61	HOLDER, CASSETTE (BLUE)	(FX173: CND, C&SA)
3	3-022-577-61	CABINET (FRONT) (BLUE)	(FX173: AEP, IT, FR, EE)	6	3-022-583-71	HOLDER, CASSETTE (GREEN)	(FX173: CND, C&SA)
3	3-022-577-71	CABINET (FRONT) (GREEN)	(FX173: AEP, IT, FR, EE)	6	3-022-583-81	HOLDER, CASSETTE (RED)	(FX173: CND, C&SA)
3	3-022-577-81	CABINET (FRONT) (RED)	(FX173: AEP, IT, FR, EE)	6	3-022-583-91	HOLDER, CASSETTE (SILVER)	(FX173: CND, C&SA)
3	3-022-697-01	CABINET (FRONT) (BLACK) (PA, C&SA)		6	3-022-588-01	HOLDER, CASSETTE (BLACK)	(FX173: AEP, FR, E)
3	3-022-697-11	CABINET (FRONT) (BLUE)	(FX173: C&SA)	6	3-022-588-11	HOLDER, CASSETTE (BLUE)	(FX173: AEP, FR, E)
3	3-022-697-21	CABINET (FRONT) (GREEN)	(FX173: C&SA)	6	3-022-588-21	HOLDER, CASSETTE (GREEN)	(FX173: AEP, FR, E)
3	3-022-697-31	CABINET (FRONT) (RED)	(FX173: C&SA)	6	3-022-588-31	HOLDER, CASSETTE (RED)	(FX173: AEP, FR, E)
3	3-022-697-51	CABINET (FRONT) (BLACK) (CND)		6	3-022-588-41	HOLDER, CASSETTE (SILVER)	(FX173: AEP, FR, E)
3	3-022-697-61	CABINET (FRONT) (BLUE)	(FX173: CND)	6	3-022-588-51	HOLDER, CASSETTE (BLACK)	(FX173: IT, EA)
3	3-022-697-71	CABINET (FRONT) (GREEN)	(FX173: CND)	6	3-022-588-61	HOLDER, CASSETTE (BLUE)	(FX173: IT, EA)
3	3-022-697-81	CABINET (FRONT) (RED)	(FX173: CND)	6	3-022-588-71	HOLDER, CASSETTE (GREEN)	(FX173: IT, EA)
4	3-019-939-01	SPRING (CASSETTE HOLDER) (EA, FX173: E)		6	3-022-588-81	HOLDER, CASSETTE (RED)	(FX173: IT, EA)
4	3-022-754-01	SPRING (CASSETTE) (EXCEPT EA, FX173: E)		6	3-022-588-91	HOLDER, CASSETTE (SILVER)	(FX173: IT, EA)
5	3-019-949-01	SPRING (TORSION) (EA, FX173: E)		6	3-022-682-01	HOLDER, CASSETTE (BLACK)	(FX177)
5	3-022-753-01	SPRING (TORSION) (EXCEPT EA, FX173: E)		7	3-019-857-01	KNOB (ROTARY) (FX173)	
6	3-022-571-01	HOLDER, CASSETTE (BLACK)	(FX171: EE)	8	3-022-578-01	KNOB, M/B (FX171, FX177)	
6	3-022-571-11	HOLDER, CASSETTE (BLUE)	(FX171: EE)	8	3-022-295-01	KNOB, M/B (FX173)	
6	3-022-571-21	HOLDER, CASSETTE (GREEN)	(FX171: EE)	9	3-019-863-01	ACTUATOR (A) (FX171, FX177)	
6	3-022-571-31	HOLDER, CASSETTE (RED)	(FX171: EE)	9	3-019-937-01	ACTUATOR (B) (FX173)	
6	3-022-571-41	HOLDER, CASSETTE (SILVER)	(FX171: EE)	10	1-475-439-11	MEGA BASS UNIT (SWITCH) (FX171, FX177)	
6	3-022-571-51	HOLDER, CASSETTE (BLACK)	(FX171: C&SA, PA)	10	1-475-440-11	MEGA BASS UNIT (ROTARY) (FX173)	
6	3-022-571-61	HOLDER, CASSETTE (BLUE)	(FX171: C&SA, PA)	11	3-022-581-01	PLATE, LIGHT GUIDE	
6	3-022-571-71	HOLDER, CASSETTE (GREEN)	(FX171: C&SA, PA)	12	3-318-203-92	SCREW (B1.7 x 9), TAPPING	
6	3-022-571-81	HOLDER, CASSETTE (RED)	(FX171: C&SA, PA)	13	3-022-580-01	SHEET (INSULATING)	
6	3-022-571-91	HOLDER, CASSETTE (SILVER)	(FX171: C&SA, PA)				

6-2. MAIN BOARD SECTION



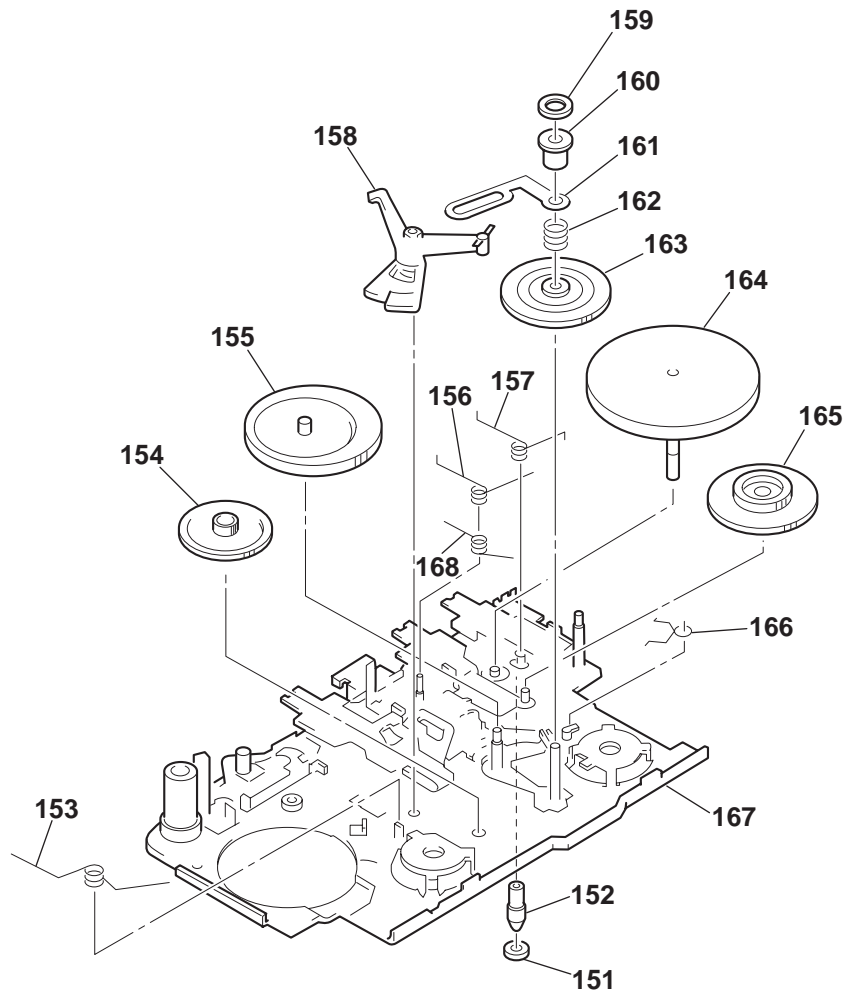
Ref. No.	Part No.	Description	Remarks	Ref. No.	Part No.	Description	Remarks
51	3-015-285-01	SCREW (M1.4), TOOTHED LOCK (WH)		52	A-3021-036-A	MAIN BOARD, COMPLETE (FX171: EA)	
52	A-3021-046-A	MAIN BOARD, COMPLETE (FX173: C&SA)		52	A-3021-035-A	MAIN BOARD, COMPLETE (FX171: E)	
52	A-3021-033-A	MAIN BOARD, COMPLETE (FX177)		52	A-3021-007-A	MAIN BOARD, COMPLETE (FX171: AEP)	
52	A-3021-047-A	MAIN BOARD, COMPLETE (FX173: IT)		52	A-3021-037-A	MAIN BOARD, COMPLETE (FX171: C&SA, PA)	
52	A-3021-044-A	MAIN BOARD, COMPLETE (FX173: FR)		53	3-019-862-01	TERMINAL (+), BATTERY	
52	A-3021-048-A	MAIN BOARD, COMPLETE (FX173: EE)		54	3-019-859-01	BUTTON (STOP)	
52	A-3021-045-A	MAIN BOARD, COMPLETE (FX173: EA)		55	3-019-861-01	BUTTON (REW)	
52	A-3021-049-A	MAIN BOARD, COMPLETE (FX173: E, 9E)		56	3-019-858-01	BUTTON (PLAY)	
52	A-3021-050-A	MAIN BOARD, COMPLETE (FX173: CND)		57	3-019-860-01	BUTTON (FF)	
52	A-3021-051-A	MAIN BOARD, COMPLETE (FX173: AEP)		58	3-022-579-01	TERMINAL (-), BATTERY	
52	A-3021-034-A	MAIN BOARD, COMPLETE (FX171: EE)		59	3-022-294-01	POINTER	
52	A-3021-032-A	MAIN BOARD, COMPLETE (FX171: IT)		60	1-501-962-11	ANTENNA, FERRITE-ROD M	
52	A-3021-038-A	MAIN BOARD, COMPLETE (FX171: FR)		61	3-022-239-01	KNOB, TUNING	

6-3. MECHANISM SECTION-1 (MF-WMFX171-114)



<u>Ref. No.</u>	<u>Part No.</u>	<u>Description</u>	<u>Remarks</u>	<u>Ref. No.</u>	<u>Part No.</u>	<u>Description</u>	<u>Remarks</u>
101	3-013-560-11	BELT		105	X-3369-749-1	PINCH LEVER (N) ASSY	
102	3-703-816-31	SCREW (M1.4), SPECIAL HEAD		106	3-920-996-01	SPRING (PINCH N)	
103	3-921-042-01	GEAR (REEL)		HP901	1-667-291-11	HEAD FLEXIBLE BOARD(W/PLAYBACK HEAD)	
104	3-703-816-73	SCREW (M1.4), SPECIAL HEAD		M901	1-763-073-11	MOTOR	

6-4. MECHANISM SECTION-2 (MF-WMFX171-114)



Ref. No.	Part No.	Description	Remarks	Ref. No.	Part No.	Description	Remarks
151	3-921-797-01	WASHER		160	3-923-530-01	SLEEVE (M)	
152	3-921-003-01	BEARING		161	3-921-335-01	WASHER, LEVER	
153	3-938-628-01	SPRING (PLAY-CP)		162	3-920-990-01	SPRING (UD), COMPRESSION	
154	3-920-999-01	GEAR (A)		163	3-921-050-01	GEAR (B)	
155	X-3369-752-1	CLUTCH ASSY		164	X-3372-619-1	WHEEL ASSY (NP), CAPSTAN	
156	3-013-142-01	SPRING (FR-CP)		165	3-921-043-01	GEAR (D)	
157	3-015-436-01	SPRING (STOP)		166	3-014-709-01	SPRING (FR LEVER OW)	
158	3-938-613-01	LEVER (OW), DETECTION		167	X-3375-054-1	CHASSIS ASSY (GL-02)	
159	3-728-091-01	WASHER, STOPPER		168	3-016-989-01	SPRING (SW-CP)	

SECTION 7 ELECTRICAL PARTS LIST

NOTE:

When indicating parts by reference number, please include the board name.

- Abbreviation
- CND : Canadian
- IT : Italian
- EE : East European
- EA : Saudi Arabia
- FR : French
- PA : Panama
- C & SA : Central and South America

- Due to standardization, replacements in the parts list may be different from the parts specified in the diagrams or the components used on the set.
- -XX, -X mean standardized parts, so they may have some difference from the original one.
- Items marked "*" are not stocked since they are seldom required for routine service. Some delay should be anticipated when ordering these items.
- CAPACITORS:
uF: μ F

- RESISTORS
All resistors are in ohms.
METAL: metal-film resistor
METAL OXIDE: Metal Oxide-film resistor
F: nonflammable
- COILS
uH: μ H
- SEMICONDUCTORS
In each case, u: μ , for example:
uA...: μ A..., uPA..., μ PA...,
uPB..., μ PB..., uPC..., μ PC...,
uPD..., μ PD...

Ref. No.	Part No.	Description	Remarks	Ref. No.	Part No.	Description	Remarks
	A-3021-007-A	MAIN BOARD, COMPLETE (FX171: AEP) *****		C5	1-162-937-11	CERAMIC CHIP 6PF 0.5PF	50V
	A-3021-032-A	MAIN BOARD, COMPLETE (FX171: IT) *****		C6	1-162-964-11	CERAMIC CHIP 0.001uF 10%	50V
	A-3021-034-A	MAIN BOARD, COMPLETE (FX171: EE) *****		C7	1-165-128-11	CERAMIC CHIP 0.22uF	16V
	A-3021-035-A	MAIN BOARD, COMPLETE (FX171: E) *****		C8	1-164-156-11	CERAMIC CHIP 0.1uF	25V
	A-3021-036-A	MAIN BOARD, COMPLETE (FX171: EA) *****		C9	1-115-156-11	CERAMIC CHIP 1uF	10V
	A-3021-037-A	MAIN BOARD, COMPLETE (FX171: C&SA, PA) *****		C10	1-164-156-11	CERAMIC CHIP 0.1uF	25V
	A-3021-038-A	MAIN BOARD, COMPLETE (FX171: FR) *****		C11	1-107-823-11	CERAMIC CHIP 0.47uF 10%	16V
	A-3021-050-A	MAIN BOARD, COMPLETE (FX173: CND) *****		C12	1-162-964-11	CERAMIC CHIP 0.001uF 10%	50V
	A-3021-051-A	MAIN BOARD, COMPLETE (FX173: AEP) *****		C14	1-126-163-11	ELECT 4.7uF 20%	50V
	A-3021-047-A	MAIN BOARD, COMPLETE (FX173: IT) *****		C15	1-164-677-11	CERAMIC CHIP 0.033uF 10%	16V
	A-3021-044-A	MAIN BOARD, COMPLETE (FX173: FR) *****		C16	1-164-227-11	CERAMIC CHIP 0.022uF 10%	25V
	A-3021-048-A	MAIN BOARD, COMPLETE (FX173: EE) *****		C17	1-126-154-11	ELECT 47uF 20%	6.3V
	A-3021-049-A	MAIN BOARD, COMPLETE (FX173: E) *****		C18	1-163-022-00	CERAMIC CHIP 0.012uF 10%	50V (AEP, IT, FR, EE, E, EA)
	A-3021-046-A	MAIN BOARD, COMPLETE (FX173: C&SA) *****		C18	1-163-037-11	CERAMIC CHIP 0.022uF 10%	25V (C&SA, PA, CND)
	A-3021-045-A	MAIN BOARD, COMPLETE (FX173: EA) *****		C19	1-163-022-00	CERAMIC CHIP 0.012uF 10%	50V (AEP, IT, FR, EE, E, EA)
	A-3021-033-A	MAIN BOARD, COMPLETE (FX177) *****		C19	1-163-037-11	CERAMIC CHIP 0.022uF 10%	25V (C&SA, PA, CND)
	3-019-862-01	TERMINAL (+), BATTERY		C22	1-162-964-11	CERAMIC CHIP 0.001uF 10%	50V
	3-022-293-01	KNOB, TUNING		C23	1-115-156-11	CERAMIC CHIP 1uF	10V
	3-022-294-01	POINTER		C24	1-162-964-11	CERAMIC CHIP 0.001uF 10%	50V
	3-022-579-01	TERMINAL (-), BATTERY		C26	1-162-964-11	CERAMIC CHIP 0.001uF 10%	50V
		< CAPACITOR >		C101	1-162-962-11	CERAMIC CHIP 470PF 10%	50V
C1	1-163-083-00	CERAMIC CHIP 1PF 50V (FX171: AEP, FR, EE, E, C&SA, PA, FX177)		C103	1-162-968-11	CERAMIC CHIP 0.0047uF 10%	50V
C1	1-163-086-00	CERAMIC CHIP 3PF 50V (FX171: IT, EA, FX173)		C104	1-126-157-11	ELECT 10uF 20%	16V
C2	1-163-099-00	CERAMIC CHIP 18PF 5% 50V (AEP, FR, E, C&SA, PA, CND)		C105	1-115-156-11	CERAMIC CHIP 1uF	10V
C2	1-163-101-00	CERAMIC CHIP 22PF 5% 50V (IT, EA)		C106	1-162-964-11	CERAMIC CHIP 0.001uF 10%	50V (FX171, FX177)
C2	1-163-087-00	CERAMIC CHIP 4PF 50V (EE)		C106	1-162-966-11	CERAMIC CHIP 0.0022uF 10%	50V (FX173)
C3	1-163-100-00	CERAMIC CHIP 20PF 5% 50V (AEP, FR, E, C&SA, PA, CND)		C107	1-115-156-11	CERAMIC CHIP 1uF	10V
C3	1-163-103-00	CERAMIC CHIP 27PF 5% 50V (IT, EA)		C108	1-162-964-11	CERAMIC CHIP 0.001uF 10%	50V
C3	1-163-089-00	CERAMIC CHIP 6PF 50V (EE)		C201	1-162-962-11	CERAMIC CHIP 470PF 10%	50V
C4	1-163-089-00	CERAMIC CHIP 6PF 50V (IT, C&SA, EA, PA, CND)		C203	1-162-968-11	CERAMIC CHIP 0.0047uF 10%	50V
C4	1-163-091-00	CERAMIC CHIP 8PF 50V (AEP, FR, EE, E)		C204	1-126-157-11	ELECT 10uF 20%	16V
				C205	1-115-156-11	CERAMIC CHIP 1uF	10V
				C206	1-162-964-11	CERAMIC CHIP 0.001uF 10%	50V (FX171, FX177)
				C206	1-162-966-11	CERAMIC CHIP 0.0022uF 10%	50V (FX173)
				C207	1-115-156-91	CERAMIC CHIP 1uF	10V
				C208	1-162-964-11	CERAMIC CHIP 0.001uF 10%	50V
				C301	1-164-156-11	CERAMIC CHIP 0.1uF	25V
				C302	1-164-156-11	CERAMIC CHIP 0.1uF	25V
				C303	1-126-153-11	ELECT 22uF 20%	6.3V
				C304	1-165-128-11	CERAMIC CHIP 0.22uF	16V

Ref. No.	Part No.	Description	Remarks	Ref. No.	Part No.	Description	Remarks
C305	1-126-176-11	ELECT	220uF 20% 10V			< DIODE >	
C306	1-115-156-11	CERAMIC CHIP	1uF 10V				
C308	1-126-162-11	ELECT	3.3uF 20% 50V				
C309	1-165-176-11	CERAMIC CHIP	0.047uF 10% 16V				
			(FX171, FX177)			< IC >	
C309	1-107-826-11	CERAMIC CHIP	0.1uF 10% 16V				
			(FX173)	IC1	8-759-493-20	IC TA2111F-(EL)	
C310	1-115-156-11	CERAMIC CHIP	1uF 10V	IC301	8-759-285-29	IC LA4582CM	
C311	1-113-619-11	CERAMIC CHIP	0.47uF 10V	IC601	8-759-447-73	IC LB1979V-TLM	
			(FX171, FX177)			< JACK >	
C311	1-115-156-11	CERAMIC CHIP	1uF 10V				
			(FX173)	J301	1-750-061-11	JACK, DC (POLARITY UNIFIED TYPE) (DC 3V)	(E, C&SA, PA)
C312	1-107-826-11	CERAMIC CHIP	0.1uF 10% 16V				
			(FX173)	J302	1-565-287-11	JACK (PHONES)	
C312	1-165-176-11	CERAMIC CHIP	0.047uF 10% 16V			< JUMPER RESISTOR >	
			(FX171, FX177)				
C313	1-115-156-11	CERAMIC CHIP	1uF 10V	JR1	1-216-864-11	METAL CHIP 0 5% 1/16W	(AEP, IT, FR, EE, E, EA)
C314	1-115-156-11	CERAMIC CHIP	1uF 10V	JR2	1-216-864-11	METAL CHIP 0 5% 1/16W	(AEP, IT, FR, EE, E, EA)
C315	1-126-153-11	ELECT	22uF 20% 6.3V	JR3	1-216-821-11	METAL CHIP 1K 5% 1/16W	(AEP, IT, FR, EE, E, EA)
C317	1-162-964-11	CERAMIC CHIP	0.001uF 10% 50V	JR4	1-216-864-11	METAL CHIP 0 5% 1/16W	(C&SA, PA, CND)
C318	1-162-964-11	CERAMIC CHIP	0.001uF 10% 50V	JR5	1-216-864-11	METAL CHIP 0 5% 1/16W	(C&SA, PA, CND)
C319	1-162-964-11	CERAMIC CHIP	0.001uF 10% 50V			< COIL >	
C322	1-162-964-11	CERAMIC CHIP	0.001uF 10% 50V	L1	1-501-962-11	ANTENNA, FERRITE-ROD	
C325	1-164-156-11	CERAMIC CHIP	0.1uF 25V	L2	1-416-623-11	COIL (WITH CORE) (RF-T) (EXCEPT IT, EA, EE)	
C328	1-164-156-11	CERAMIC CHIP	0.1uF 25V	L2	1-416-624-11	COIL (WITH CORE) (RF-T) (IT, EA)	
C329	1-164-156-11	CERAMIC CHIP	0.1uF 25V	L2	1-416-625-91	COIL (WITH CORE) (RF-T) (EE)	
				L3	1-416-626-11	COIL (WITH CORE) (OSC-T) (EXCEPT IT,EA,EE)	
C601	1-164-344-11	CERAMIC CHIP	0.068uF 10% 25V	L3	1-416-627-11	COIL (WITH CORE) (OSC-T) (IT, EA)	
C602	1-107-823-11	CERAMIC CHIP	0.47uF 10% 16V	L3	1-416-628-11	COIL (WITH CORE) (OSC-T) (EE)	
C603	1-126-176-11	ELECT	220uF 20% 10V	L4	1-406-408-11	COIL (OSC) (EXCEPT IT, EA)	
C605	1-164-344-11	CERAMIC CHIP	0.068uF 10% 25V	L4	1-406-409-11	COIL (OSC) (IT, EA)	
C606	1-164-344-11	CERAMIC CHIP	0.068uF 10% 25V	L101	1-414-385-11	INDUCTOR CHIP 0uH	
C607	1-115-467-11	CERAMIC CHIP	0.22uF 10% 10V	L201	1-414-385-11	INDUCTOR CHIP 0uH	
C608	1-165-176-11	CERAMIC CHIP	0.047uF 10% 16V	L301	1-414-385-11	INDUCTOR CHIP 0uH	
C609	1-164-505-11	CERAMIC CHIP	2.2uF 16V	L302	1-414-385-11	INDUCTOR CHIP 0uH	
C610	1-107-823-11	CERAMIC CHIP	0.47uF 10% 16V			< TRANSISTOR >	
C612	1-164-156-11	CERAMIC CHIP	0.1uF 25V	Q2	8-729-216-22	TRANSISTOR 2SA1162-G	
				Q101	8-729-207-65	TRANSISTOR RN1410	
				Q201	8-729-207-65	TRANSISTOR RN1410	
				Q301	8-729-230-49	TRANSISTOR 2SC2712-YG	
				Q302	8-729-216-22	TRANSISTOR 2SA1162-G	
						< RESISTOR >	
				R1	1-216-864-11	METAL CHIP 0 5% 1/16W	
				R2	1-216-839-11	METAL CHIP 33K 5% 1/16W	
				R3	1-216-835-11	METAL CHIP 15K 5% 1/16W	
				R4	1-216-835-11	METAL CHIP 15K 5% 1/16W	
				R5	1-216-831-11	METAL CHIP 6.8K 5% 1/16W	
				R6	1-216-825-11	METAL CHIP 2.2K 5% 1/16W	
				R7	1-216-815-11	METAL CHIP 330 5% 1/16W	
				R8	1-216-797-11	METAL CHIP 10 5% 1/16W	
				R9	1-216-815-11	METAL CHIP 330 5% 1/16W	
				R101	1-216-821-11	METAL CHIP 1K 5% 1/16W	
						< FILTER >	
CF1	1-527-870-00	FILTER 455kHz					
CF2	1-767-733-71	FILTER ASSY, CERAMIC 10.7MHz					
						< CONNECTOR >	
L CN301	1-750-346-21	CONNECTOR, FFC/EPC (ZIF) 6P					
L CN302	1-750-346-21	CONNECTOR, FFC/EPC (ZIF) 6P(FX171, FX177)					
* CN302	1-784-527-11	HOUSING, CONNECTOR (ZIF-J) 9P (FX173)					
						< FILTER >	
CP1	1-236-711-21	FILTER, BAND PASS (EXCEPT EE)					
CP1	1-239-813-21	FILTER, BAND PASS (EE)					
						< VARIABLE CAPACITOR >	
CV1	1-141-592-11	CAP, VAR, POLYETHYLENE (TUNING)					
		(FX171: EXCEPT EE, FX177)					
CV1	1-141-592-21	CAP, VAR, POLYETHYLENE (TUNING)					
		(FX171: EE)					
CV1	1-141-595-11	CAP, VAR, POLYETHYLENE (-M) (TUNING)					
		(FX173)					

MAIN

Ref. No.	Part No.	Description	Remarks
R103	1-216-835-11	METAL CHIP	15K 5% 1/16W
R104	1-216-835-11	METAL CHIP	15K 5% 1/16W
R105	1-216-855-11	METAL CHIP	680K 5% 1/16W
R106	1-216-818-11	METAL CHIP	560 5% 1/16W
R107	1-216-789-11	METAL CHIP	2.2 5% 1/16W (AEP, IT, EE, FX173: CND)
R107	1-216-797-11	METAL CHIP	10 5% 1/16W (FR, E, C&SA, EA, PA)
R107	1-216-864-11	METAL CHIP	0 5% 1/16W (FX177)
R109	1-216-850-11	METAL CHIP	270K 5% 1/16W (AEP, IT, EE, CND)
R109	1-216-846-11	METAL CHIP	120K 5% 1/16W (FR, E, C&SA, EA, PA)
R120	1-216-823-11	METAL CHIP	1.5K 5% 1/16W
R201	1-216-821-11	METAL CHIP	1K 5% 1/16W
R203	1-216-835-11	METAL CHIP	15K 5% 1/16W
R204	1-216-835-11	METAL CHIP	15K 5% 1/16W
R205	1-216-855-11	METAL CHIP	680K 5% 1/16W
R206	1-216-818-11	METAL CHIP	560 5% 1/16W
R207	1-216-789-11	METAL CHIP	2.2 5% 1/16W (AEP, IT, EE, FX173: CND)
R207	1-216-797-11	METAL CHIP	10 5% 1/16W (FR, E, C&SA, EA, PA)
R207	1-216-864-11	METAL CHIP	0 5% 1/16W (FX177)
R209	1-216-850-11	METAL CHIP	270K 5% 1/16W (AEP, IT, EE, CND)
R209	1-216-846-11	METAL CHIP	120K 5% 1/16W (FR, E, C&SA, EA, PA)
R301	1-216-821-11	METAL CHIP	1K 5% 1/16W
R305	1-216-837-11	METAL CHIP	22K 5% 1/16W (FX171: EXCEPT IT, FX173, FX177)
R305	1-216-835-11	METAL CHIP	15K 5% 1/16W (FX171: IT)
R306	1-216-835-11	METAL CHIP	15K 5% 1/16W (FX171, FX177)
R306	1-216-825-11	METAL CHIP	2.2K 5% 1/16W (FX173)
R308	1-216-835-11	METAL CHIP	15K 5% 1/16W
R320	1-216-841-11	METAL CHIP	47K 5% 1/16W
R321	1-216-829-11	METAL CHIP	4.7K 5% 1/16W
R322	1-216-829-11	METAL CHIP	4.7K 5% 1/16W
R601	1-216-857-11	METAL CHIP	1M 5% 1/16W
R602	1-216-857-11	METAL CHIP	1M 5% 1/16W
R603	1-216-857-11	METAL CHIP	1M 5% 1/16W
R604	1-216-839-11	METAL CHIP	33K 5% 1/16W
R605	1-216-821-11	METAL CHIP	1K 5% 1/16W
R606	1-216-845-11	METAL CHIP	100K 5% 1/16W
R607	1-216-833-11	METAL CHIP	10K 5% 1/16W
R608	1-216-821-11	METAL CHIP	1K 5% 1/16W
R609	1-216-821-11	METAL CHIP	1K 5% 1/16W

Ref. No.	Part No.	Description	Remarks
		< VARIABLE RESISTOR >	
RV301	1-225-362-11	RES, VAR, CARBON (VOLUME)	
RV601	1-238-663-11	RES, ADJ, CARBON 4.7K	
		< SWITCH >	
S302	1-762-917-11	SWITCH, DETECTION (SMALL TYPE) (POWER)	
S303	1-692-298-11	SWITCH, SLIDE (FM MODE/TAPE SELECTOR)	
S304	1-692-299-11	SWITCH, SLIDE (FUNCTION)	
S305	1-692-298-11	SWITCH, SLIDE (AVLS)	
		< TRANSFORMER >	
T1	1-404-949-11	TRANSFORMER, IF	
		< THERMISTOR >	
TH601	1-810-794-11	THERMISTOR, POSITIVE	
		< VIBRATOR >	
X2	1-767-733-71	FILTER ASSY, CERAMIC 10.7MHz	

		MISCELLANEOUS	

10	1-475-439-11	MEGA BASS UNIT (SWITCH) (FX171, FX177)	
10	1-475-440-11	MEGA BASS UNIT (ROTARY) (FX173)	
HP901	1-667-291-11	HEAD FLEXIBLE BOARD (W/PLAYBACK HEAD)	
M901	1-763-073-11	MOTOR	

		ACCESSORIES & PACKING MATERIALS	

1-505-521-11		HEADPHONE (MDR-023) (AEP, IT, FR, EE, CND)	
1-528-179-11		BATTERY, NICKEL. CADMIUM (FX177)	
1-528-441-11		BATTERY CHARGER (BC-810U) (FX177)	
3-020-998-01		CLIP, BELT	
3-861-489-11		MANUAL, INSTRUCTION (ENGLISH)	
3-861-489-21		MANUAL, INSTRUCTION (FRENCH)	
3-861-489-31		MANUAL, INSTRUCTION (ENGLISH /FRENCH/GERMAN/ITALIAN) (FX171, FX173)	
3-861-489-41		MANUAL, INSTRUCTION (SPANISH/DUTCH /SWEDISH/PORTUGUESE) (FX171, FX173)	
3-861-489-51		MANUAL, INSTRUCTION (POLISH/CZECK /GREEK/TURKISH) (FX171, FX173)	
3-861-489-61		MANUAL, INSTRUCTION (RUSSIAN /HUNGARIAN/BULGARIAN) (FX171, FX173)	
3-861-489-71		MANUAL, INSTRUCTION (ENGLISH/CHINESE /KOREAN) (FX171, FX173)	
3-861-489-81		MANUAL, INSTRUCTION (ENGLISH/CHINESE /KOREAN) (FX171, FX173)	
8-953-224-90		HEADPHONE MDR-E802LP//K SET (E, C&SA, EA, PA)	

WM-FX171/FX173/FX177

SONY®

SERVICE MANUAL

1999. 01

US Model

WM-FX171

Canadian Model

WM-FX173/FX177

AEP Model

E Model

Chinese Model

WM-FX171/FX173

Tourist Model

WM-FX171

SUPPLEMENT-1

File this supplement with the Service Manual.

**Subject : 1. Parts list addition of WM-FX171(US/Tourist/Chinese),
WM-FX173 (Chinese) models
2. Circuit Board change**

• DIFFERENT PARTS LIST

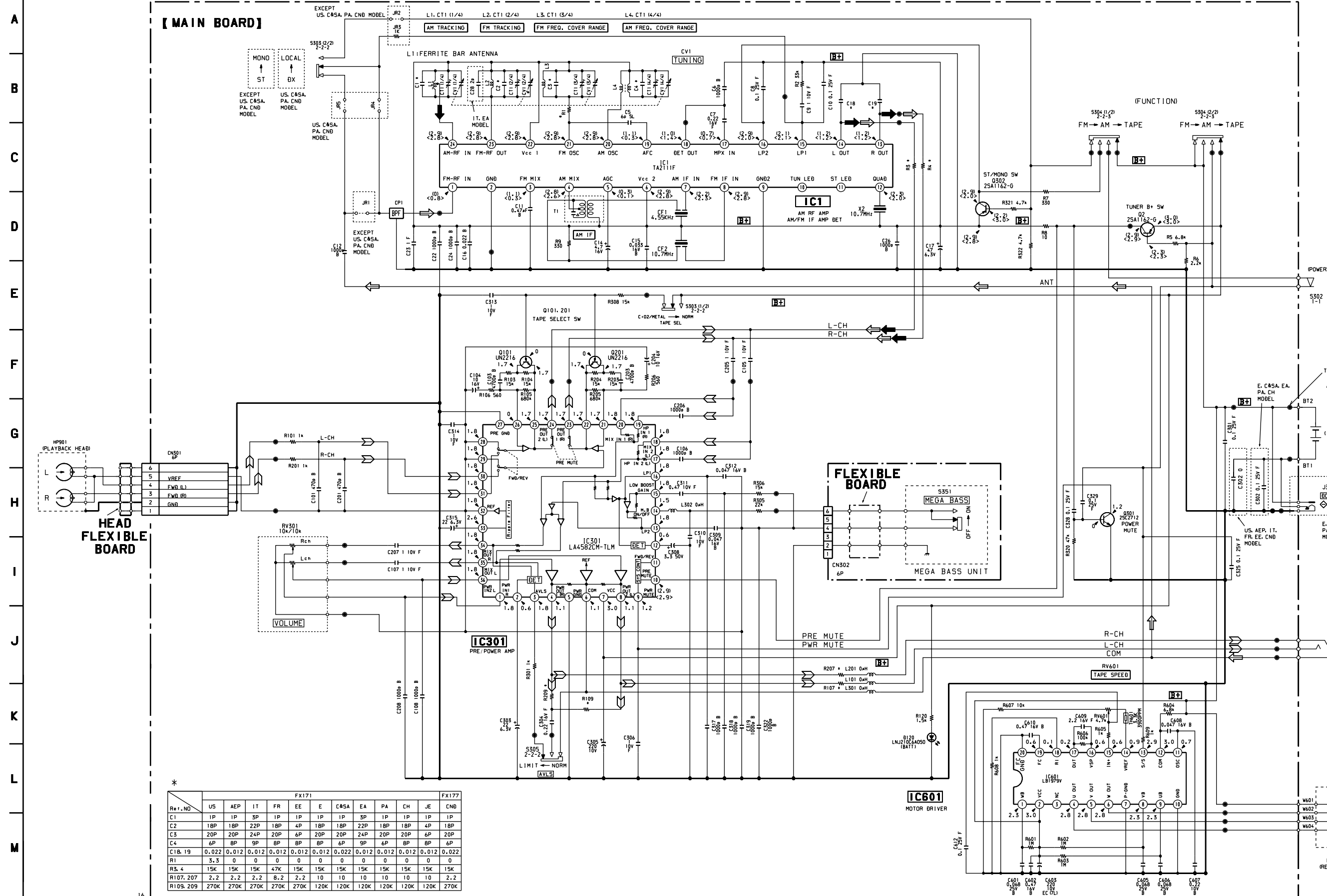
Page	Before Change				After Change			
	Ref. No.	Part No.	Description	Remarks	Part No.	Description	Remarks	
26	1	3-022-292-01	CABINET (REAR) (BLACK)	(PA, E, C&SA, EA)	3-022-292-01	CABINET (REAR) (BLACK)	(PA, E, C&SA, EA,US,CH,JE)	
	1	3-022-292-21	CABINET (REAR) (BLUE)	(FX173: E, C&SA, EA)	3-022-292-21	CABINET (REAR) (BLUE)	(FX173: E, C&SA, EA,CH)	
	1	3-022-292-41	CABINET (REAR) (GREEN)	(FX173: E, C&SA, EA)	3-022-292-41	CABINET (REAR) (GREEN)	(FX173: E, C&SA, EA,CH)	
	1	3-022-292-61	CABINET (REAR) (RED)	(FX173: E, C&SA, EA)	3-022-292-61	CABINET (REAR) (RED)	(FX173: E, C&SA, EA,CH)	
	3	3-022-577-01	CABINET (FRONT) (BLACK)	(E, EA)	3-022-577-01	CABINET (FRONT) (BLACK)	(E, EA,CH,JE)	
	3	3-022-577-11	CABINET (FRONT) (BLUE)	(FX173: E, EA)	3-022-577-11	CABINET (FRONT) (BLUE)	(FX173: E, EA,CH)	
	3	3-022-577-21	CABINET (FRONT) (GREEN)	(FX173: E, EA)	3-022-577-21	CABINET (FRONT) (GREEN)	(FX173: E, EA,CH)	
	3	3-022-577-31	CABINET (FRONT) (RED)	(FX173: E, EA)	3-022-577-31	CABINET (FRONT) (RED)	(FX173: E, EA,CH)	
	3	3-022-697-51	CABINET (FRONT) (BLACK)	(CND)	3-022-697-51	CABINET (FRONT) (BLACK)	(CND,US)	
	6	3-022-571-11	HOLDER, CASSETTE (BLUE)	(FX171: EE)	3-022-571-11	HOLDER, CASSETTE (BLUE)	(FX171: EE,JE)	
	6	3-022-571-41	HOLDER, CASSETTE (SILVER)	(FX171: EE)	3-022-571-41	HOLDER, CASSETTE (SILVER)	(FX171: EE,JE)	
	6	3-022-571-51	HOLDER, CASSETTE (BLACK)	(FX171: C&SA, PA)	3-022-571-51	HOLDER, CASSETTE (BLACK)	(FX171: C&SA, PA,US)	
	6	3-022-571-61	HOLDER, CASSETTE (BLUE)	(FX171: C&SA, PA)	3-022-571-61	HOLDER, CASSETTE (BLUE)	(FX171: C&SA, PA,US)	
	6	3-022-571-81	HOLDER, CASSETTE (RED)	(FX171: C&SA, PA)	3-022-571-81	HOLDER, CASSETTE (RED)	(FX171: C&SA, PA,US)	
	6	3-022-576-01	HOLDER, CASSETTE (BLACK)	(FX171: AEP, FR, E)	3-022-576-01	HOLDER, CASSETTE (BLACK)	(FX171: AEP, FR, E,CH)	
	6	3-022-576-11	HOLDER, CASSETTE (BLUE)	(FX171: AEP, FR, E)	3-022-576-11	HOLDER, CASSETTE (BLUE)	(FX171: AEP, FR, E,CH)	
	6	3-022-576-21	HOLDER, CASSETTE (GREEN)	(FX171: AEP, FR, E)	3-022-576-21	HOLDER, CASSETTE (GREEN)	(FX171: AEP, FR, E,CH)	
	6	3-022-576-31	HOLDER, CASSETTE (RED)	(FX171: AEP, FR, E)	3-022-576-31	HOLDER, CASSETTE (RED)	(FX171: AEP, FR, E,CH)	
	6	3-022-576-41	HOLDER, CASSETTE (SILVER)	(FX171: AEP, FR, E)	3-022-576-41	HOLDER, CASSETTE (SILVER)	(FX171: AEP, FR, E,CH)	
	6	3-022-588-01	HOLDER, CASSETTE (BLACK)	(FX173: AEP, FR, E)	3-022-588-01	HOLDER, CASSETTE (BLACK)	(FX173: AEP, FR, E,CH)	
	6	3-022-588-11	HOLDER, CASSETTE (BLUE)	(FX173: AEP, FR, E)	3-022-588-11	HOLDER, CASSETTE (BLUE)	(FX173: AEP, FR, E,CH)	
	6	3-022-588-21	HOLDER, CASSETTE (GREEN)	(FX173: AEP, FR, E)	3-022-588-21	HOLDER, CASSETTE (GREEN)	(FX173: AEP, FR, E,CH)	
	6	3-022-588-31	HOLDER, CASSETTE (RED)	(FX173: AEP, FR, E)	3-022-588-31	HOLDER, CASSETTE (RED)	(FX173: AEP, FR, E,CH)	
	6	3-022-588-41	HOLDER, CASSETTE (SILVER)	(FX173: AEP, FR, E)	3-022-588-41	HOLDER, CASSETTE (SILVER)	(FX173: AEP, FR, E,CH)	
	27	52	A-3021-049-A	MAIN BOARD, COMPLETE	(FX173: E, 9E)	A-3021-049-A	MAIN BOARD, COMPLETE	(FX173: E,CH)
		52	A-3021-035-A	MAIN BOARD, COMPLETE	(FX171: E)	A-3021-035-A	MAIN BOARD, COMPLETE	(FX171: E,CH)
		52	-----	-----	-----	A-3021-135-A	MAIN BOARD, COMPLETE	(FX171: JE)
		52	-----	-----	-----	A-3021-209-A	MAIN BOARD, COMPLETE	(FX171: US)

• Abbreviation

- CH : Chinese
- JE : Tourist
- C&SA : Central and South America
- PA : Panama
- EA : Saudi Arabia
- FR : French
- EE : East European
- CND : Canadian

SCHEMATIC DIAGRAM
(FX171/FX177 MODELS)

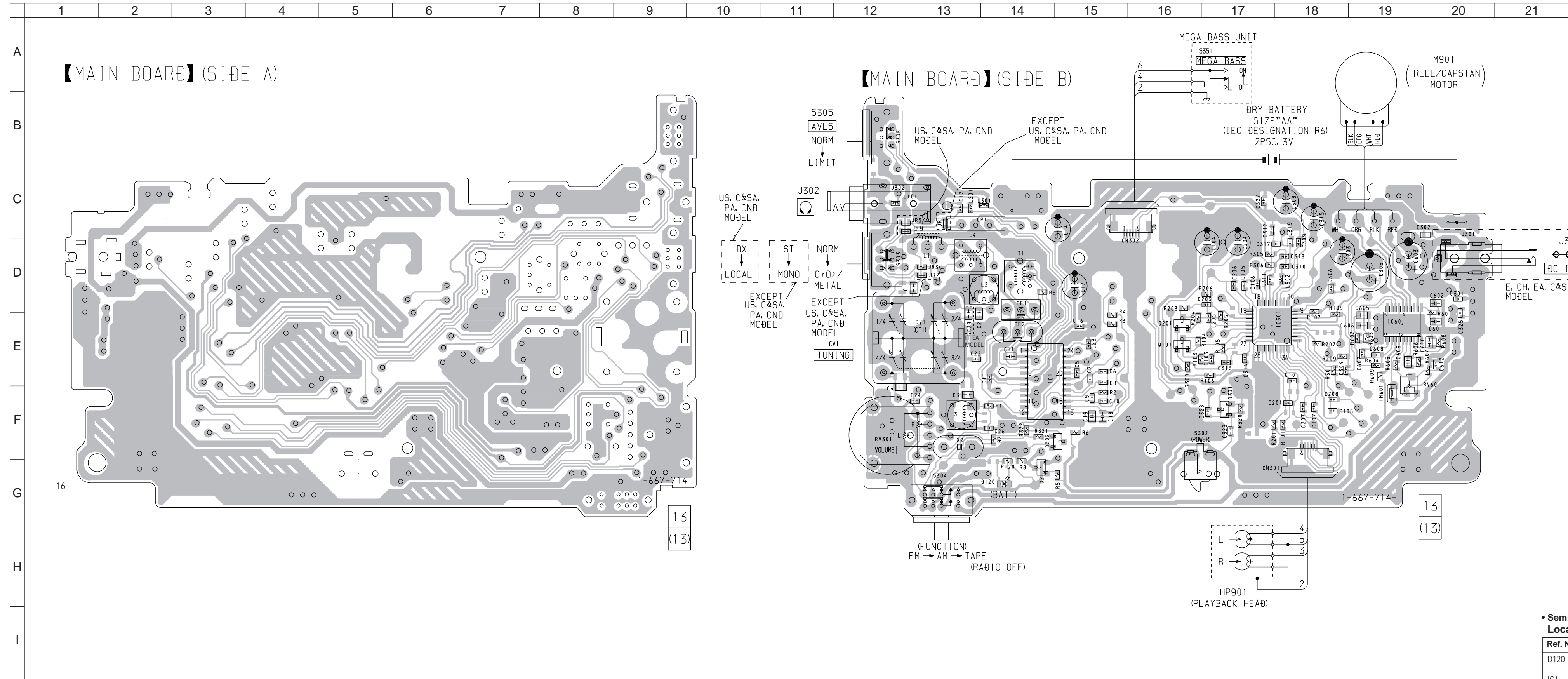
1 2 3 4 5 6 7 8 9 10 11 12 13 14 15 16 17 18 19



* Component list table for FX171 and FX177 models.

Ref. NO	FX171										FX177	
	US	AEP	IT	FR	EE	E	C45A	EA	PA	CH	JE	CND
C1	1P	1P	3P	1P	1P	1P	1P	3P	1P	1P	1P	1P
C2	18P	18P	22P	18P	4P	18P	18P	22P	18P	18P	4P	18P
C3	20P	20P	24P	20P	6P	20P	20P	24P	20P	20P	6P	20P
C4	6P	8P	9P	8P	8P	8P	6P	6P	8P	8P	8P	6P
C18, 19	0.022	0.012	0.012	0.012	0.012	0.012	0.022	0.012	0.012	0.012	0.012	0.022
R1	3.3	0	0	0	0	0	0	0	0	0	0	0
RS, 4	15K	15K	15K	47K	15K	15K	15K	15K	15K	15K	15K	15K
R107, 207	2.2	2.2	2.2	8.2	2.2	10	10	10	10	10	10	2.2
R109, 209	270K	270K	270K	270K	270K	120K	120K	120K	120K	120K	120K	270K

PRINTED WIRING BOARD
(FX171/FX177 MODELS)



• Semiconductor Location

Ref. No.	Location
D120	G-14
IC1	F-14
IC301	E-18
IC601	E-19
Q2	G-14
Q101	E-16
Q201	E-16
Q301	F-17
Q302	F-14

1 2 3 4 5 6 7 8 9 10 11 12 13 14 15 16 17 18 19 20 21

A

B

C

D

E

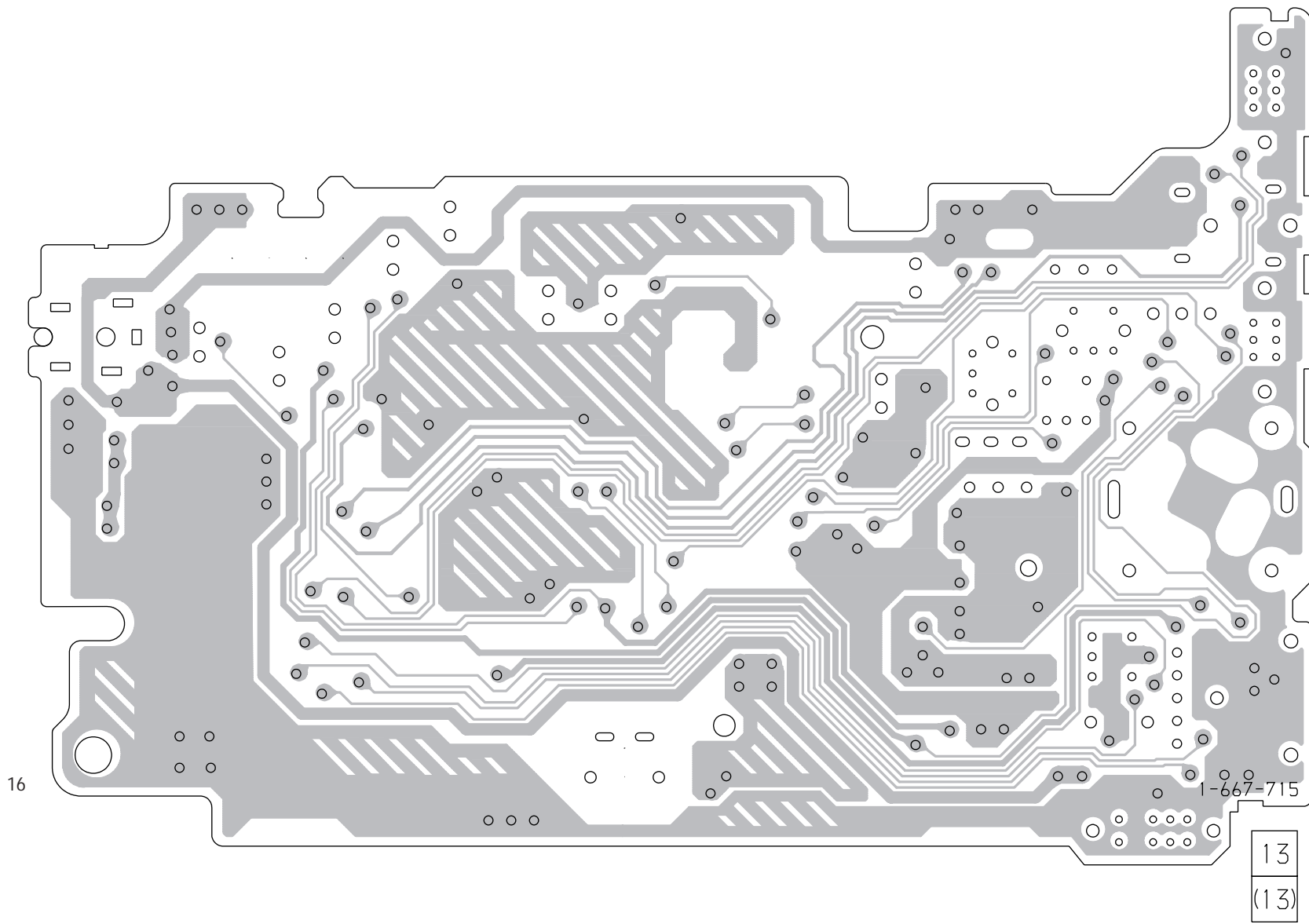
F

G

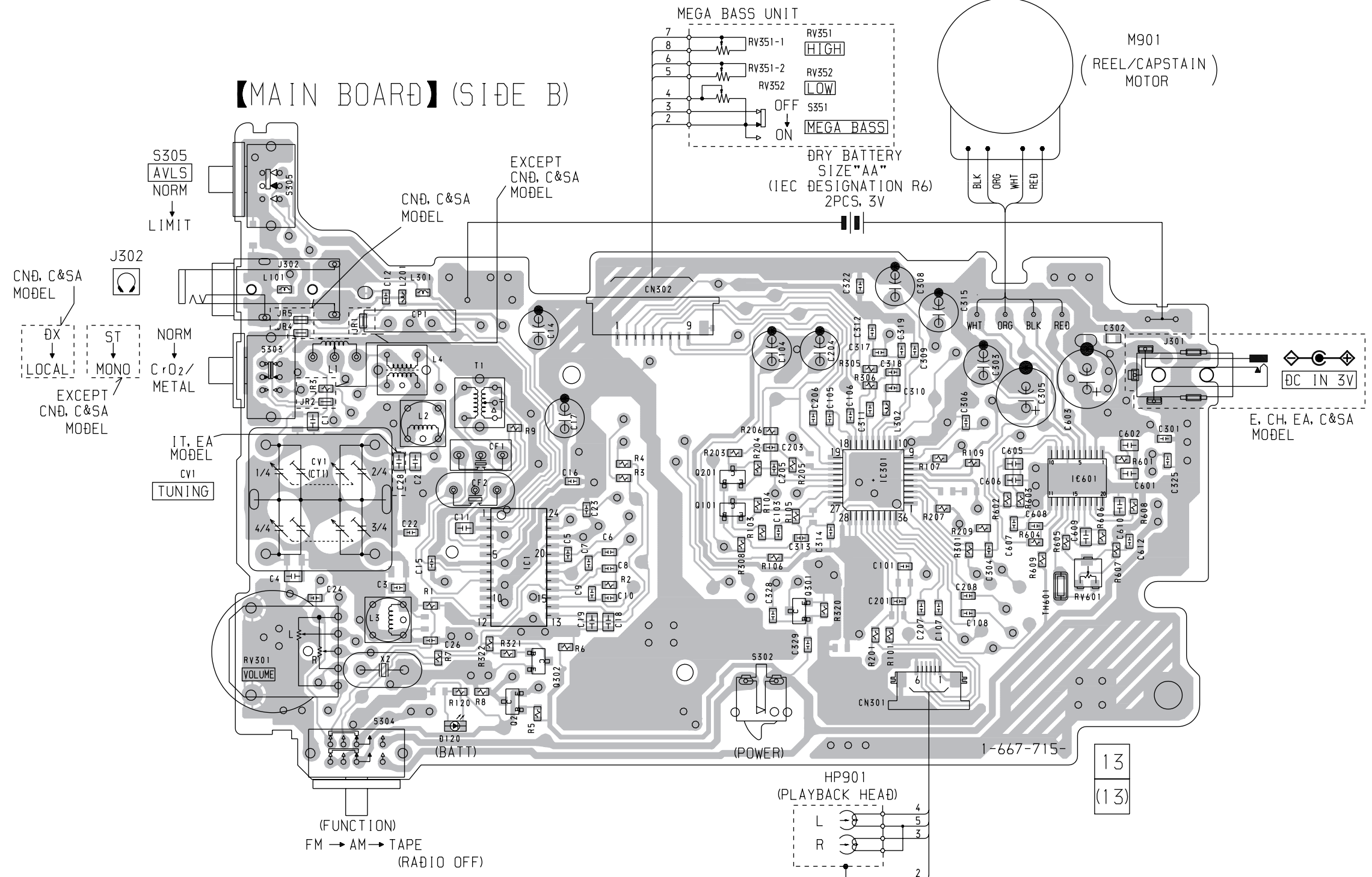
H

I

【MAIN BOARD】(SIDE A)



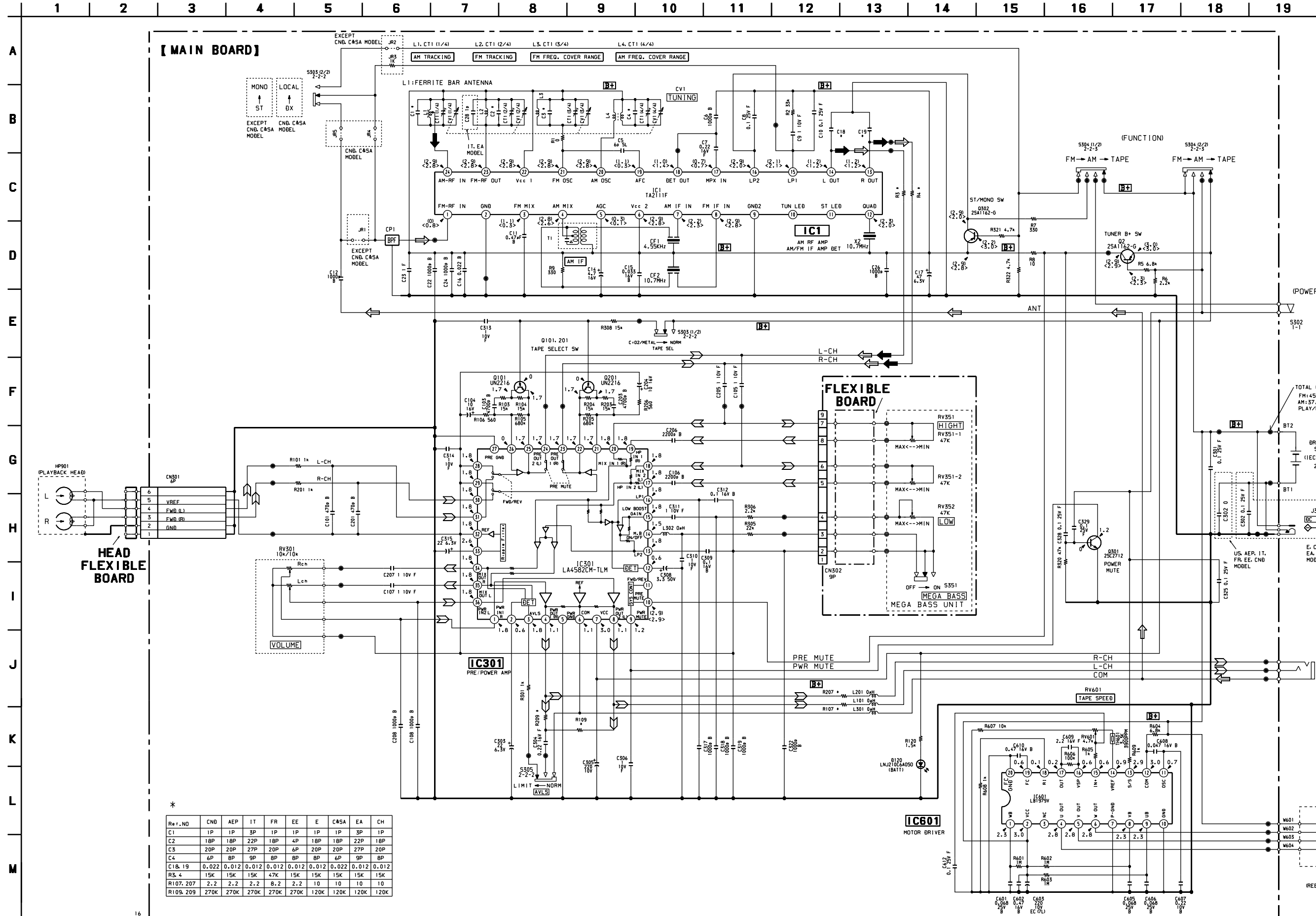
【MAIN BOARD】(SIDE B)



• Semiconductor Location

Ref. No.	Location
D120	G-14
IC1	F-15
IC301	E-18
IC601	E-19
Q2	G-14
Q101	E-16
Q201	E-16
Q301	F-17
Q302	F-15

SCHEMATIC DIAGRAM
(FX173 MODEL)



SECTION 7
ELECTRICAL PARTS LIST

NOTE:

When indicating parts by reference number, please include the board name.

- Abbreviation
CND : Canadian
IT : Italian
EE : East European
EA : Saudi Arabia
FR : French
PA : Panama
C & SA : Central and South America
CH : Chinese
JE : Tourist

- Due to standardization, replacements in the parts list may be different from the parts specified in the diagrams or the components used on the set.
- -XX, -X mean standardized parts, so they may have some difference from the original one.
- Items marked "*" are not stocked since they are seldom required for routine service. Some delay should be anticipated when ordering these items.
- CAPACITORS:
uF: μF

- RESISTORS
All resistors are in ohms.
METAL: metal-film resistor
METAL OXIDE: Metal Oxide-film resistor
F: nonflammable
- COILS
uH: μH
- SEMICONDUCTORS
In each case, u: μ, for example:
uA...: μA... , uPA... , μPA... ,
uPB... , μPB... , uPC... , μPC... ,
uPD... , μPD...

Ref. No.	Part No.	Description	Remarks
A-3021-209-A	MAIN BOARD, COMPLETE (FX171: US)		
A-3021-044-A	MAIN BOARD, COMPLETE (FX173: FR)		
A-3021-048-A	MAIN BOARD, COMPLETE (FX173: EE)		
A-3021-049-A	MAIN BOARD, COMPLETE (FX173: E, CH)		
A-3021-045-A	MAIN BOARD, COMPLETE (FX173: EA)		
A-3021-046-A	MAIN BOARD, COMPLETE (FX173: C&SA)		
A-3021-007-A	MAIN BOARD, COMPLETE (FX171: AEP)		
A-3021-032-A	MAIN BOARD, COMPLETE (FX171: IT)		
A-3021-038-A	MAIN BOARD, COMPLETE (FX171: FR)		
A-3021-034-A	MAIN BOARD, COMPLETE (FX171: EE)		
A-3021-035-A	MAIN BOARD, COMPLETE (FX171: E, CH)		
A-3021-036-A	MAIN BOARD, COMPLETE (FX171: EA)		
A-3021-037-A	MAIN BOARD, COMPLETE (FX171: C&SA, PA)		
A-3021-135-A	MAIN BOARD, COMPLETE (FX171: JE)		
A-3021-050-A	MAIN BOARD, COMPLETE (FX173: CND)		
A-3021-051-A	MAIN BOARD, COMPLETE (FX173: AEP)		
A-3021-047-A	MAIN BOARD, COMPLETE (FX173: IT)		
A-3021-033-A	MAIN BOARD, COMPLETE (FX177)		
3-019-862-01	TERMINAL (+), BATTERY		
3-022-293-01	KNOB, TUNING		
3-022-294-01	POINTER		
3-022-579-01	TERMINAL (-), BATTERY		
	< CAPACITOR >		
C1	1-163-083-00	CERAMIC CHIP 1PF	50V (EXCEPT IT, EA)
C1	1-163-086-00	CERAMIC CHIP 3PF	50V (IT, EA)
C2	1-163-099-00	CERAMIC CHIP 18PF	5% 50V (US, AEP, FR, E, C&SA, PA, CH, CND)
C2	1-163-101-00	CERAMIC CHIP 22PF	5% 50V (IT, EA)
C2	1-163-087-00	CERAMIC CHIP 4PF	50V (EE, JE)

Ref. No.	Part No.	Description	Remarks
C3	1-163-100-00	CERAMIC CHIP 20PF	5% 50V (US, AEP, FR, E, C&SA, PA, CH, CND)
C3	1-163-102-00	CERAMIC CHIP 24PF	5% 50V (FX171: IT, EA)
C3	1-163-089-00	CERAMIC CHIP 6PF	50V (EE, JE)
C3	1-163-103-00	CERAMIC CHIP 27PF	5% 50V (FX173: IT, EA)
C4	1-163-089-00	CERAMIC CHIP 6PF	50V (US, C&SA, PA, CND)
C4	1-163-091-00	CERAMIC CHIP 8PF	50V (AEP, FR, EE, E, CH, JE)
C4	1-164-275-91	CERAMIC CHIP 9PF	5% 50V (IT, EA)
C5	1-162-937-11	CERAMIC CHIP 6PF	0.5PF 50V
C6	1-162-964-11	CERAMIC CHIP 0.001uF	10% 50V
C7	1-165-128-11	CERAMIC CHIP 0.22uF	16V
C8	1-164-156-11	CERAMIC CHIP 0.1uF	25V
C9	1-115-156-11	CERAMIC CHIP 1uF	10V
C10	1-164-156-11	CERAMIC CHIP 0.1uF	25V
C11	1-107-823-11	CERAMIC CHIP 0.47uF	10% 16V
C12	1-162-964-11	CERAMIC CHIP 0.001uF	10% 50V
C14	1-124-259-11	ELECT 4.7uF	20% 16V
C15	1-164-677-11	CERAMIC CHIP 0.033uF	10% 16V
C16	1-164-227-11	CERAMIC CHIP 0.022uF	10% 25V
C17	1-126-154-11	ELECT 47uF	20% 6.3V
C18	1-163-037-11	CERAMIC CHIP 0.022uF	10% 25V (US, C&SA, PA, CND)
C18	1-163-022-00	CERAMIC CHIP 0.012uF	10% 50V (AEP, IT, FR, EE, E, EA, CH, JE)
C19	1-163-037-11	CERAMIC CHIP 0.022uF	10% 25V (US, C&SA, PA, CND)
C19	1-163-022-00	CERAMIC CHIP 0.012uF	10% 50V (AEP, IT, FR, EE, E, EA, CH, JE)
C22	1-162-964-11	CERAMIC CHIP 0.001uF	10% 50V
C23	1-115-156-11	CERAMIC CHIP 1uF	10V
C24	1-162-964-11	CERAMIC CHIP 0.001uF	10% 50V
C26	1-162-964-11	CERAMIC CHIP 0.001uF	10% 50V
C28	1-163-085-00	CERAMIC CHIP 2PF	50V (FX171: IT, EA)
C28	1-163-217-11	CERAMIC CHIP 1PF	0.25PF 50V (FX173: IT, EA)
C101	1-162-962-11	CERAMIC CHIP 470PF	10% 50V
C103	1-162-968-11	CERAMIC CHIP 0.0047uF	10% 50V
C104	1-126-157-11	ELECT 10uF	20% 16V
C105	1-115-156-11	CERAMIC CHIP 1uF	10V
C106	1-162-964-11	CERAMIC CHIP 0.001uF	10% 50V (FX171/FX177)
C106	1-162-966-11	CERAMIC CHIP 0.0022uF	10% 50V (FX173)

Ref. No.	Part No.	Description	Remarks
C107	1-115-156-11	CERAMIC CHIP 1uF	10V
C108	1-162-964-11	CERAMIC CHIP 0.001uF	10% 50V
C201	1-162-962-11	CERAMIC CHIP 470PF	10% 50V
C203	1-162-968-11	CERAMIC CHIP 0.0047uF	10% 50V
C204	1-126-157-11	ELECT 10uF	20% 16V
C205	1-115-156-11	CERAMIC CHIP 1uF	10V
C206	1-162-964-11	CERAMIC CHIP 0.001uF	10% 50V (FX171/FX177)
C206	1-162-966-11	CERAMIC CHIP 0.0022uF	10% 50V (FX173)
C207	1-115-156-11	CERAMIC CHIP 1uF	10V
C208	1-162-964-11	CERAMIC CHIP 0.001uF	10% 50V
C301	1-164-156-11	CERAMIC CHIP 0.1uF	25V
C302	1-216-864-11	METAL CHIP 0	5% 1/16W (US, AEP, IT, FR, EE, CND)
C302	1-164-156-11	CERAMIC CHIP 0.1uF	25V (E, C&SA, EA, PA, CH)
C303	1-126-153-11	ELECT 22uF	20% 6.3V
C304	1-165-128-11	CERAMIC CHIP 0.22uF	16V
C305	1-126-176-11	ELECT 220uF	20% 10V
C306	1-115-156-11	CERAMIC CHIP 1uF	10V
C308	1-126-162-11	ELECT 3.3uF	20% 50V
C309	1-165-176-11	CERAMIC CHIP 0.047uF	10% 16V (FX171/FX177)
C309	1-107-826-91	CERAMIC CHIP 0.1uF	10% 16V (FX173)
C310	1-115-156-11	CERAMIC CHIP 1uF	10V
C311	1-113-619-11	CERAMIC CHIP 0.47uF	10V (FX171/FX177)
C311	1-115-156-11	CERAMIC CHIP 1uF	10V (FX173)
C312	1-165-176-11	CERAMIC CHIP 0.047uF	10% 16V (FX171/FX177)
C312	1-107-826-91	CERAMIC CHIP 0.1uF	10% 16V (FX173)
C313	1-115-156-11	CERAMIC CHIP 1uF	10V
C314	1-115-156-11	CERAMIC CHIP 1uF	10V
C315	1-126-153-11	ELECT 22uF	20% 6.3V
C317	1-162-964-11	CERAMIC CHIP 0.001uF	10% 50V
C318	1-162-964-11	CERAMIC CHIP 0.001uF	10% 50V
C319	1-162-964-11	CERAMIC CHIP 0.001uF	10% 50V
C322	1-162-964-11	CERAMIC CHIP 0.001uF	10% 50V
C325	1-164-156-11	CERAMIC CHIP 0.1uF	25V
C328	1-164-156-11	CERAMIC CHIP 0.1uF	25V
C329	1-164-156-11	CERAMIC CHIP 0.1uF	25V
C601	1-164-344-11	CERAMIC CHIP 0.068uF	10% 25V
C602	1-107-823-11	CERAMIC CHIP 0.47uF	10% 16V
C603	1-126-176-11	ELECT 220uF	20% 10V
C605	1-164-344-11	CERAMIC CHIP 0.068uF	10% 25V
C606	1-164-344-11	CERAMIC CHIP 0.068uF	10% 25V
C607	1-115-467-11	CERAMIC CHIP 0.22uF	10% 10V
C608	1-165-176-11	CERAMIC CHIP 0.047uF	10% 16V
C609	1-164-505-11	CERAMIC CHIP 2.2uF	16V
C610	1-107-823-11	CERAMIC CHIP 0.47uF	10% 16V
C612	1-164-156-11	CERAMIC CHIP 0.1uF	25V
		< FILTER >	
CF1	1-527-870-00	FILTER 455kHz	
CF2	1-767-733-71	FILTER ASSY, CERAMIC 10.7MHZ	

Ref. No.	Part No.	Description	Remarks
		< CONNECTOR >	
CN301	1-750-346-21	CONNECTOR, FFC/EPC (ZIF) 6P	
CN302	1-750-346-21	CONNECTOR, FFC/EPC (ZIF) 6P (FX171/FX177)	
* CN302	1-784-527-21	CONNECTOR, FPC (ZIF) 9P (FX173)	
		< CONPOSITION CIRCUIT BLOCK >	
CP1	1-236-711-21	FILTER, BAND PASS (US, AEP, IT, FR, E, C&SA, EA, PA, CH, CND)	
CP1	1-239-813-21	FILTER, BAND PASS (EE, JE)	
		< VARIABLE CAPACITOR >	
CT1	1-141-595-21	CAP, VAR	
CV1	1-141-595-21	CAP, VAR (TUNING)	
		< DIODE >	
D120	8-719-067-62	LED LNJ210C6AOSO (BATT)	
		< IC >	
IC1	8-759-493-20	IC TA2111F-(EL)	
IC301	8-759-285-29	IC LA4582CM	
IC601	8-759-447-73	IC LB1979V-TLM	
		< JACK >	
J301	1-750-061-11	JACK,DC(POLARITY UNIFIED TYPE) (DC IN 3V) (E, C&SA, EA, PA, CH, JE)	
J302	1-565-287-11	JACK (HEADPHONES)	
		< JUMPER RESISTOR >	
JR1	1-216-864-11	METAL CHIP 0	5% 1/16W (AEP, IT, FR, EE, E, EA, CH, JE)
JR2	1-216-864-11	METAL CHIP 0	5% 1/16W (AEP, IT, FR, EE, E, EA, CH, JE)
JR3	1-216-821-11	METAL CHIP 1K	5% 1/16W (AEP, IT, FR, EE, E, EA, CH, JE)
JR4	1-216-864-11	METAL CHIP 0	5% 1/16W (US, C&SA, PA, CND)
JR5	1-216-864-11	METAL CHIP 0	5% 1/16W (US, C&SA, PA, CND)
		< COIL >	
L1	1-501-962-11	ANTENNA, FERRITE-ROD (MW)	
L2	1-416-623-11	COIL (WITH CORE) (US, AEP, FR, E, C&SA, PA, CH, CND)	
L2	1-416-624-11	COIL (WITH CORE) (IT, EA)	
L2	1-416-625-11	COIL (WITH CORE) (EE, JE)	
L3	1-416-626-11	COIL (WITH CORE) (US, AEP, FR, E, C&SA, PA, CH, CND)	
L3	1-416-627-11	COIL (WITH CORE) (IT, EA)	
L3	1-416-628-11	COIL (WITH CORE) (EE, JE)	
L4	1-406-408-21	COIL (OSC) (US, AEP, FR, EE, E, C&SA, PA, CH,CND)	
L4	1-406-409-11	COIL (OSC) (IT, EA, JE)	
L101	1-414-760-21	INDUCTOR CHIP 0uH	
L201	1-414-760-21	INDUCTOR CHIP 0uH	
L301	1-414-760-21	INDUCTOR CHIP 0uH	
L302	1-414-760-21	INDUCTOR CHIP 0uH	

Ref. No.	Part No.	Description	Remarks	Ref. No.	Part No.	Description	Remarks
		< TRANSISTOR >					
Q2	8-729-216-22	TRANSISTOR 2SA1162-G		R306	1-216-835-11	METAL CHIP 15K	5% 1/16W (FX171/FX177)
Q101	8-729-207-65	TRANSISTOR RN1410		R306	1-216-825-11	METAL CHIP 2.2K	5% 1/16W (FX173)
Q201	8-729-207-65	TRANSISTOR RN1410		R308	1-216-835-11	METAL CHIP 15K	5% 1/16W
Q301	8-729-230-49	TRANSISTOR 2SC2712-YG		R320	1-216-841-11	METAL CHIP 47K	5% 1/16W
Q302	8-729-216-22	TRANSISTOR 2SA1162-G		R321	1-216-829-11	METAL CHIP 4.7K	5% 1/16W
		< RESISTOR >					
R1	1-216-791-11	METAL CHIP 3.3	5% 1/16W (US)	R322	1-216-829-11	METAL CHIP 4.7K	5% 1/16W
R1	1-216-864-11	METAL CHIP 0	5% 1/16W (EXCEPT US)	R601	1-216-857-11	METAL CHIP 1M	5% 1/16W
R2	1-216-839-11	METAL CHIP 33K	5% 1/16W	R602	1-216-857-11	METAL CHIP 1M	5% 1/16W
R3	1-216-835-11	METAL CHIP 15K	5% 1/16W (EXCEPT FR)	R603	1-216-857-11	METAL CHIP 1M	5% 1/16W
R3	1-216-841-11	METAL CHIP 47K	5% 1/16W (FR)	R604	1-216-831-11	METAL CHIP 6.8K	5% 1/16W
R4	1-216-835-11	METAL CHIP 15K	5% 1/16W (EXCEPT FR)	R605	1-216-821-11	METAL CHIP 1K	5% 1/16W
R4	1-216-841-11	METAL CHIP 47K	5% 1/16W (FR)	R606	1-216-845-11	METAL CHIP 100K	5% 1/16W
R5	1-216-831-11	METAL CHIP 6.8K	5% 1/16W	R607	1-216-833-11	METAL CHIP 10K	5% 1/16W
R6	1-216-825-11	METAL CHIP 2.2K	5% 1/16W	R608	1-216-821-11	METAL CHIP 1K	5% 1/16W
R7	1-216-815-11	METAL CHIP 330	5% 1/16W	R609	1-216-821-11	METAL CHIP 1K	5% 1/16W
R8	1-216-797-11	METAL CHIP 10	5% 1/16W			< VARIABLE RESISTOR >	
R9	1-216-815-11	METAL CHIP 330	5% 1/16W	RV301	1-225-362-11	RES, VAR, CARBON (VOLUME)	
R101	1-216-821-11	METAL CHIP 1K	5% 1/16W	RV601	1-238-663-11	RES, ADJ, CARBON 4.7K	
R103	1-216-835-11	METAL CHIP 15K	5% 1/16W			< SWITCH >	
R104	1-216-835-11	METAL CHIP 15K	5% 1/16W	S302	1-762-917-11	SWITCH, DETECTION (SMALL TYPE) (POWER)	
R105	1-216-855-11	METAL CHIP 680K	5% 1/16W	S303	1-692-298-11	SWITCH, SLIDE (FM MODE/TAPE SELECTOR)	
R106	1-216-818-11	METAL CHIP 560	5% 1/16W	S304	1-692-299-11	SWITCH, SLIDE (FUNCTION)	
R107	1-216-789-11	METAL CHIP 2.2	5% 1/16W (US, AEP, IT, EE, CND)	S305	1-692-298-11	SWITCH, SLIDE (AVLS)	
R107	1-216-796-11	RES,CHIP 8.2	5% 1/16W (FR)			< TRANSFORMER >	
R107	1-216-797-11	METAL CHIP 10	5% 1/16W (E, C&SA, EA, PA, CH, JE)	T1	1-404-949-11	TRANSFORMER, IF	
R109	1-216-850-11	METAL CHIP 270K	5% 1/16W (US, AEP, IT, FR, EE, CND)			< THERMISTOR >	
R109	1-216-846-11	METAL CHIP 120K	5% 1/16W (E, C&SA, EA, PA, CH, JE)	TH601	1-810-794-11	THERMISTOR, POSITIVE	
R120	1-216-823-11	METAL CHIP 1.5K	5% 1/16W			< VIBRATOR >	
R201	1-216-821-11	METAL CHIP 1K	5% 1/16W	X2	1-767-733-71	FILTER ASSY, CERAMIC 10.7MHz	*****
R203	1-216-835-11	METAL CHIP 15K	5% 1/16W			MISCELLANEOUS	*****
R204	1-216-835-11	METAL CHIP 15K	5% 1/16W	10	1-475-439-11	MEGA BASS UNIT (SWITCH) (FX171/FX177)	
R205	1-216-855-11	METAL CHIP 680K	5% 1/16W	10	1-475-440-11	MEGA BASS UNIT (ROTARY) (FX173)	
R206	1-216-818-11	METAL CHIP 560	5% 1/16W	HP901	1-667-291-11	HEAD FLEXIBLE BOARD (W/PLAYBACK HEAD)	
R207	1-216-789-11	METAL CHIP 2.2	5% 1/16W (US, AEP, IT, EE, CND)	M901	1-763-073-11	MOTOR (REEL/CAPSTAN) (PULLEY)	
R207	1-216-796-11	RES,CHIP 8.2	5% 1/16W (FR)			*****	
R207	1-216-797-11	METAL CHIP 10	5% 1/16W (E, C&SA, EA, PA, CH, JE)				
R209	1-216-850-11	METAL CHIP 270K	5% 1/16W (US, AEP, IT, FR, EE, CND)				
R209	1-216-846-11	METAL CHIP 120K	5% 1/16W (E, C&SA, EA, PA, CH, JE)				
R301	1-216-821-11	METAL CHIP 1K	5% 1/16W				
R305	1-216-837-11	METAL CHIP 22K	5% 1/16W				

WM-FX171/FX173/FX177

<u>Ref. No.</u>	<u>Part No.</u>	<u>Description</u>	<u>Remarks</u>
		ACCESSORIES & PACKING MATERIALS *****	
	1-505-521-11	HEADPHONE (MDR-023) (US, AEP, IT, FR, EE, CND)	
	1-528-179-11	BATTERY, NICKEL CADMIUM (FX177)	
	1-528-763-11	BATTERY, CHARGER (BC-810U) (FX177)	
	3-020-998-01	CLIP, BELT	
	3-861-489-11	MANUAL, INSTRUCTION (ENGLISH) (US, CND)	
	3-861-489-22	MANUAL, INSTRUCTION (FRENCH) (FR, CND)	
	3-861-489-32	MANUAL, INSTRUCTION (ENGLISH/FRENCH/ GERMAN/ITALIAN) (AEP, IT, EE)	
	3-861-489-42	MANUAL, INSTRUCTION (SPANISH/DUTCH/ SWEDISH/PORTUGUESE) (AEP, C&SA, PA)	
	3-861-489-52	MANUAL, INSTRUCTION (POLISH/CZECK/ GREEK/TURKISH)(AEP)	
	3-861-489-62	MANUAL, INSTRUCTION (RUSSIAN/ HUNGARIAN/BULGARIAN/FINNISH) (AEP, EE)	
	3-861-489-72	MANUAL, INSTRUCTION (ENGLISH/CHINESE/ KOREAN/ARABIC) (E, EA)	
	3-861-489-82	MANUAL, INSTRUCTION (ENGLISH/CHINESE/ KOREAN) (E)	
	3-861-489-91	MANUAL, INSTRUCTION (ENGLISH/SWEDISH/ CHINESE/KOREAN) (JE)	
	3-864-137-11	MANUAL, INSTRUCTION (CHINESE) (CH)	
	8-953-130-90	HEADPHONE MDR-E801//K SET (E, C&SA, EA, PA, CH, JE)	
	8-953-224-90	HEADPHONE MDR-E802LP//K SET (E, C&SA, EA, PA, CH, JE)	